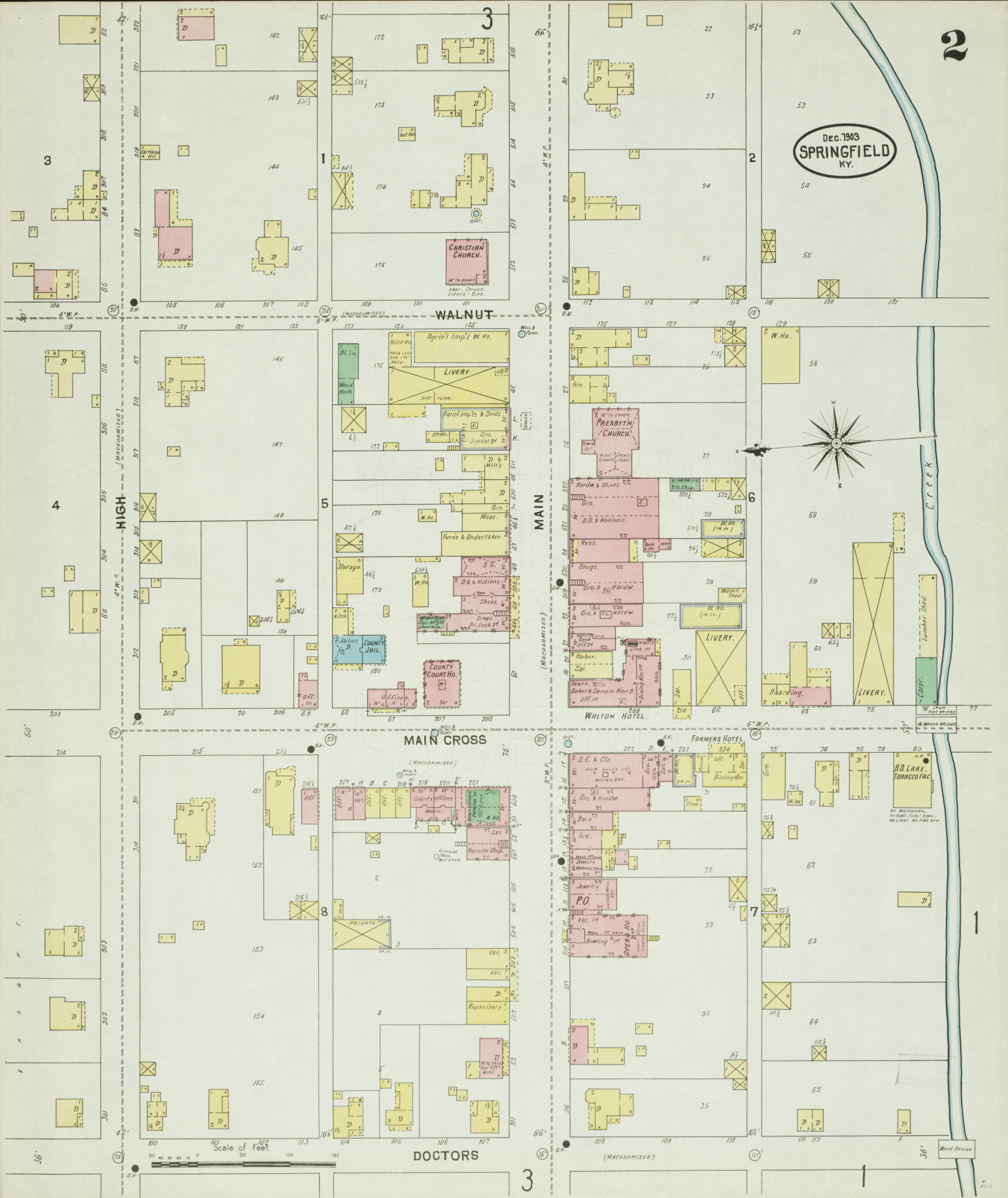


Dec. 1903
SPRINGFIELD
KY.



WALNUT

MAIN

MAIN CROSS

DOCTORS

HIGH

Scale of feet

Word Group

Dec. 1903
SPRINGFIELD
KY.

PUBLIC SCHOOL.

5

4

2

DOCTORS

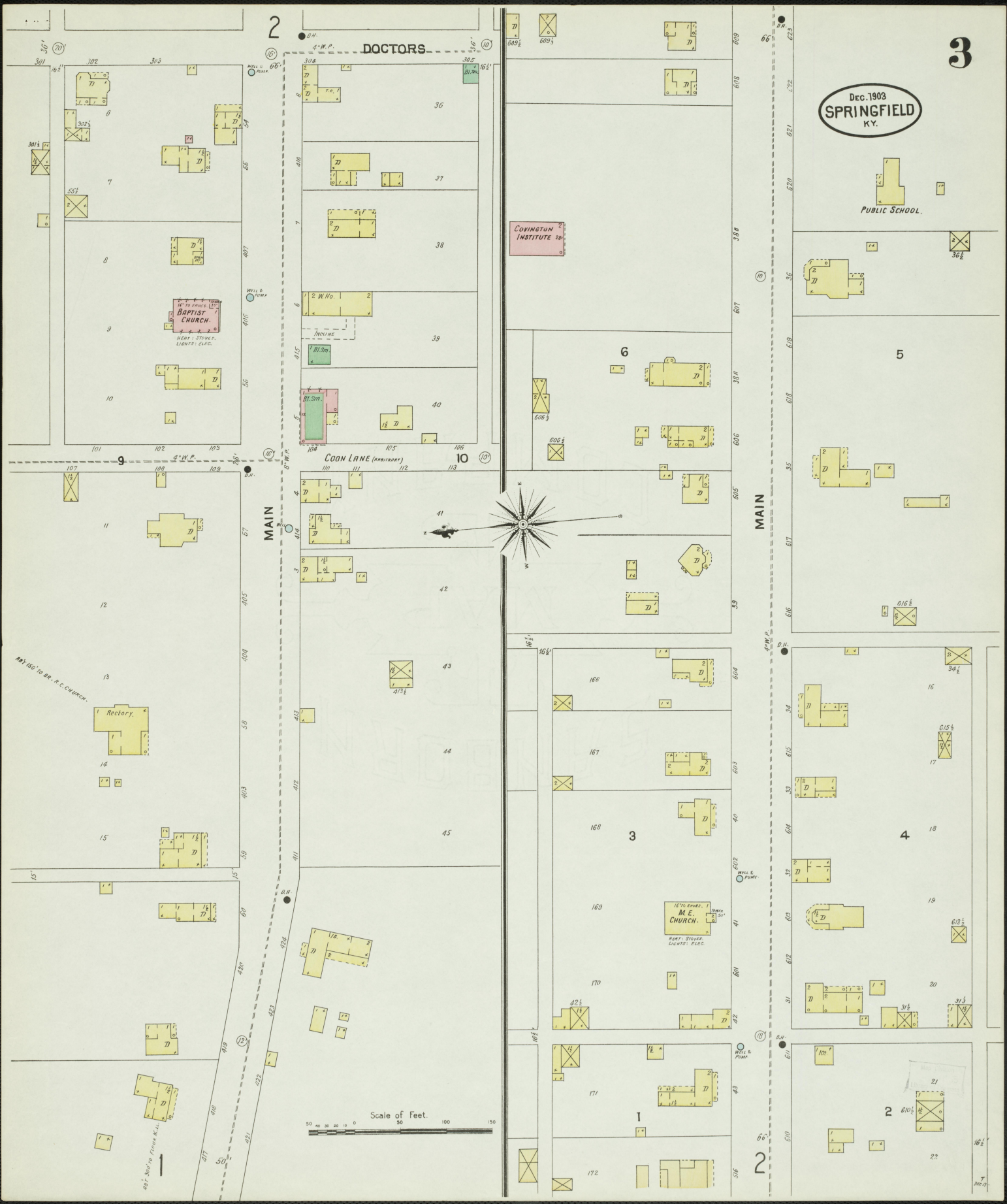
COON LANE (ARBITRARY)

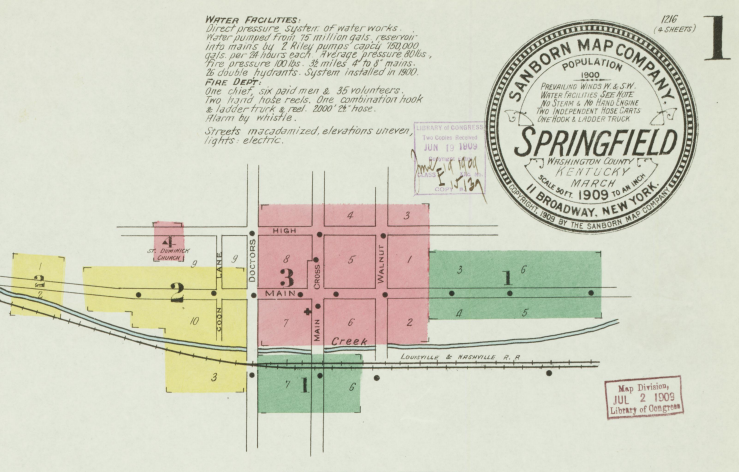
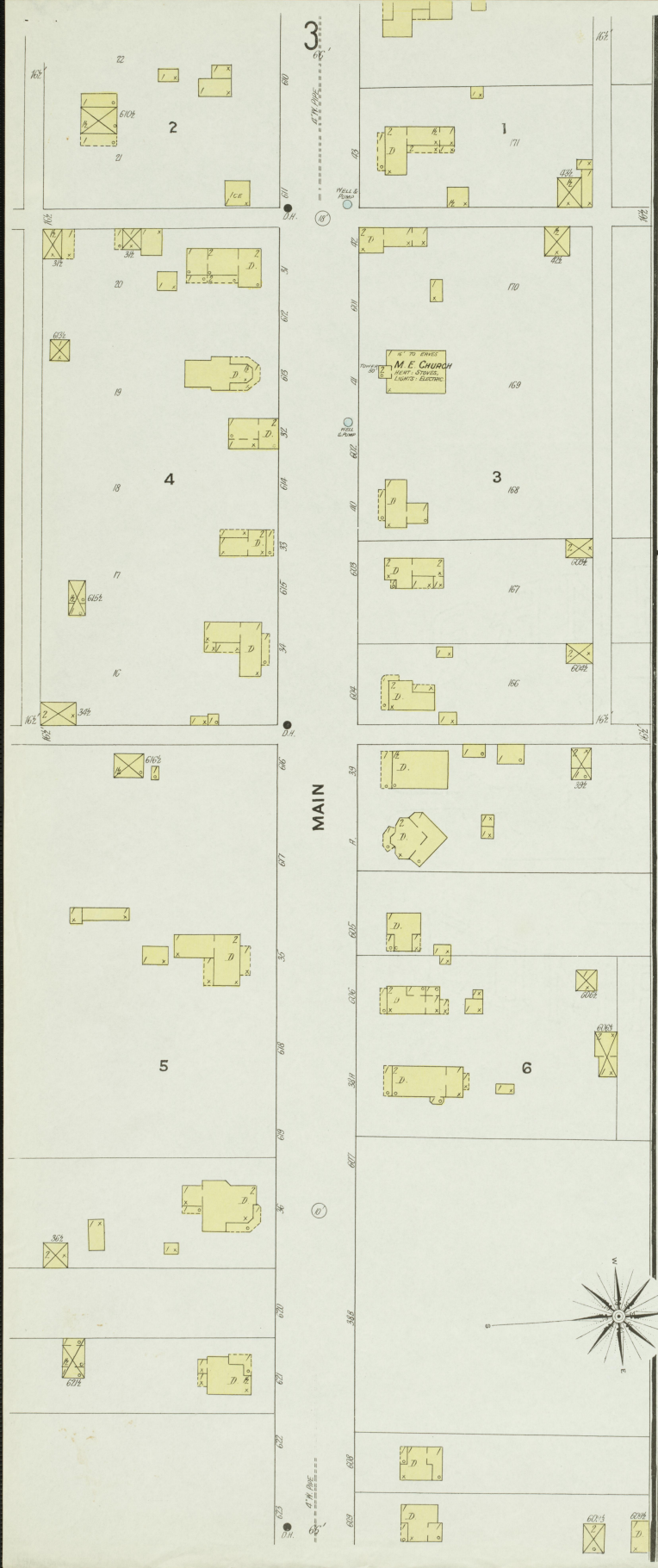
41

6

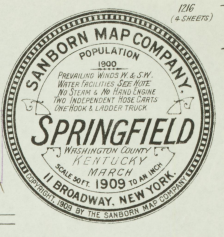
3

1





WATER FACILITIES
 Direct pressure system of water works.
 Water supplied from 75 million gals. reservoir
 lifts mains by 7 Riley pumps capacity 100,000
 gals. per 24 hours each. Pressure pressure 40 lbs.,
 fire pressure 100 lbs. 3 1/2 miles of 8" mains,
 25 double hydrants. System installed in 1900.
Fire Dept.
 One chief, six paid men & 35 volunteers.
 Two hand hose teams. One combination hook
 & ladder truck & reel. 2000' 2 1/2 hose.
 Alarm by whistles.
 Streets macadamized, elevations uneven,
 lights electric.



INDEX.

SPECIALS.		SHEET		SHEET		SHEET	
A	F	M	S	W			
Amer. Tob. Co., Leaf Tob. Warehouse, 1	Fire Department, 3	Marks & Green Planing Mill, Saab, 3	St. Catherine of Siena Academy, 4	Walton Hotel, 3			
Baptist Church, 3	Jarboe, J. W., & Co.'s Roller Mill, 2	McClure & Mayer, Warehouse, 2	Springfield Hotel, 3	Lumber Co., 3			
Catholic School, 3	Methodist Episcopal Church, 3	Opera House, 3	Roller Mill, 3	Water and Light Co., 4			
Christian Church, 3	L. & N. R. R. Depot, 1	Post Office, 3	Washington County Tobacco Warehouse, 3				
County Court House and Jail, 3	Lake, R. D., Tobacco Re-handling, 3	Presbyterian Church, 3	Public School, 4				
	Literary Society of St. Rose, 4						

