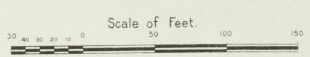




FEB. 1913
 HOPKINSVILLE
 KY.

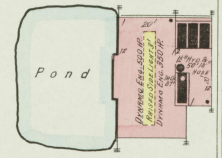
ROCK BRIDGE STEMMERY
 TOBACCO REHANDLING
 Bldg. 102
 Press Rm.
 Bldg. 102
 Press Rm.



FEB 1913
HOPKINSVILLE
KY.

KENTUCKY PUBLIC SERVICE CO.
ELECTRIC LIGHT PLANT

MAN ON DUTY DAY & NIGHT -
HEAT & POWER SYSTEM - 1,500 ELEC. FEEL CAP.
BY RS SHOWN - 3 CHLOR. CHEMICAL EXCHGERS -
6 SAND BUCKETS



ON CR. 67'

N D Exposure

LOUISVILLE & NASHVILLE R.R.

PETER FOX SONS CO.
POULTRY HO.

306

SCATTERED HILL ROAD TIES

JT PAYTON
COAL YARD

216

N. CAMPBELL

7

N. CAMPBELL

217

307

WILLIAM

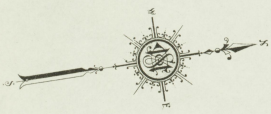
VINE

LANES' PRESBYTERIAN
M.E. CHURCH
REAR
WATER TOWER
WINDMILL

HOPKINSVILLE M & F COLLEGE
(M.G.R.)
HART STORES - LIGHTS; RANGE OIL

301

BRADSHAW



4

ST.

VINE

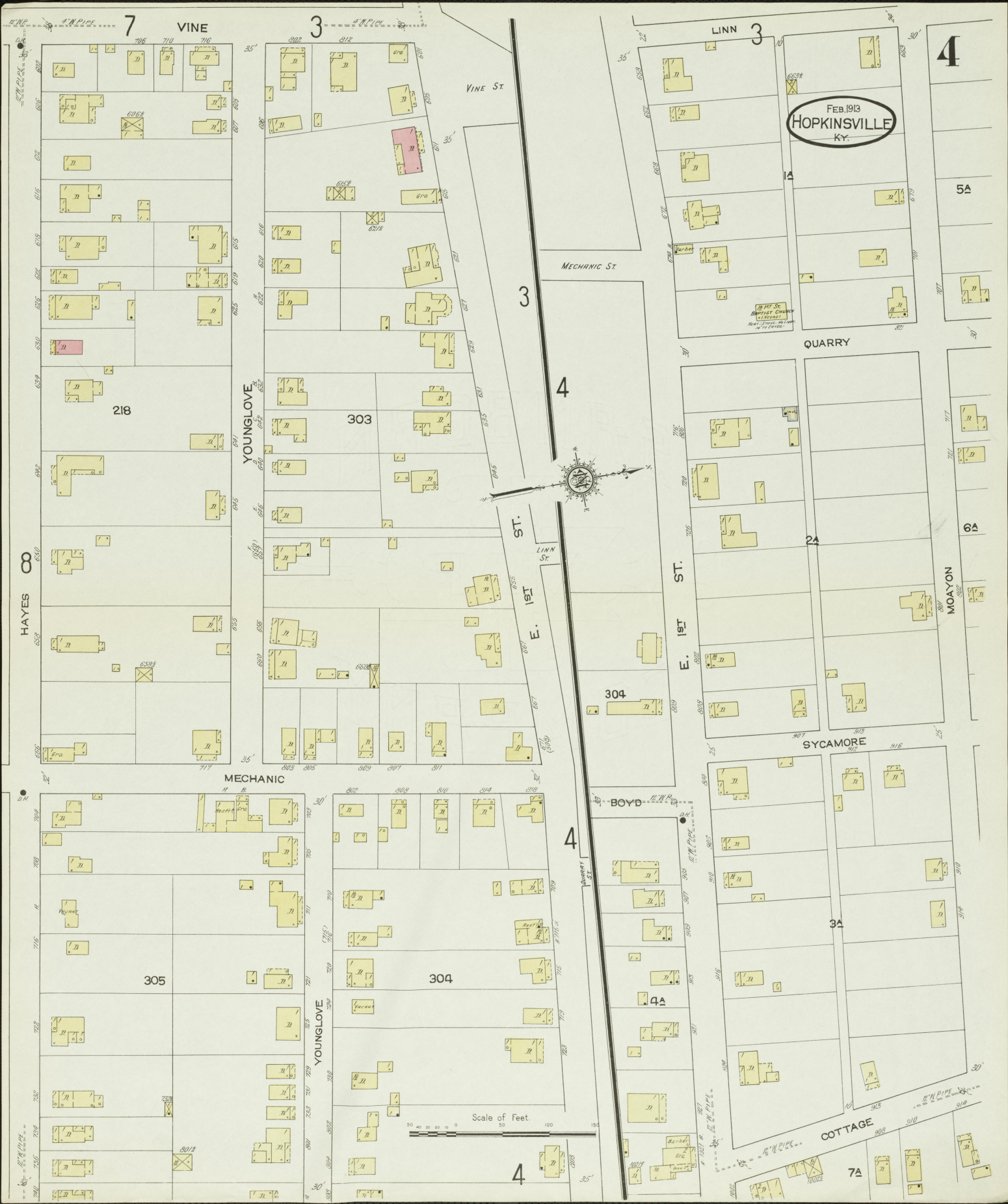
302

Scale of Feet.
0 50 100 150

4 LINN

WOOD

MORRISON AV.



FEB. 1913
HOPKINSVILLE
KY.



Scale of Feet.
0 50 100 150

7 VINE

3

LINN 3

4

HAYES 8

YOUNGLOVE

MECHANIC ST

3

4

QUARRY

5A

218

303

2A

6A

304

MOAYON

MECHANIC

SYCAMORE

4

BOYD

305

304

3A

YOUNGLOVE

COTTAGE

7A

4

FEB. 1913
HOPKINSVILLE
KY.



HOPKINSVILLE WATER CO. PUMPING STATION
SHOWING LINES ON PREMISES
POWER STATION, LIGHT, ELEC. TOWER, COKE, AND GAS COOKERS
NO EXPOSURE ANY SIDE

H. M. DALTON STONE CO.
STONE CRUSHING PLANT
SHOWING LINES ON PREMISES
STONE CRUSHER
ELEC. MOTOR
WATER
NO EXPOSURE ANY SIDE

H. M. DALTON STONE CO.
NO EXPOSURE ANY SIDE

McCLARD & ARMSTRONG
STONE CUTTERS

UNIVERSALIST
CHURCH
FOUR STORES
REAR LOTS
W. 4TH ST.

Scale of Feet. 0 50 100 150



5

N. MAIN

2

CRESCENT W.

E. 1ST

102

E. 1ST ST.

103

N. VIRGINIA

208

E. 2ND ST.

106

VIRGINIA STREET
BAPTIST CHURCH
(NEGRO)
HEAT, COOKING
LIGHT, GAS & ELEC.
TO BE EXERCISED

107

N. E. DUTCH
TOBACCO REHANDLING HO.
BUILT BY
HEAT, COOKING, LIGHT, GAS & ELEC.
TO BE EXERCISED

209

210

N. LIBERTY

N. CLAY

7

W. 3RD ST.

W. 4TH ST.



Scale of Feet

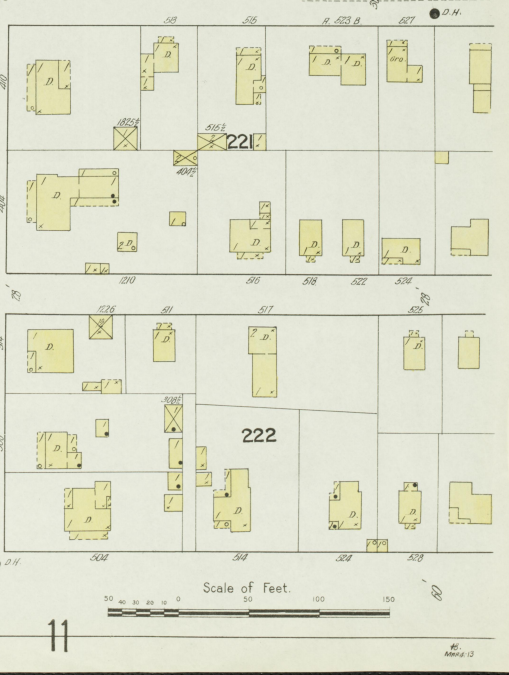
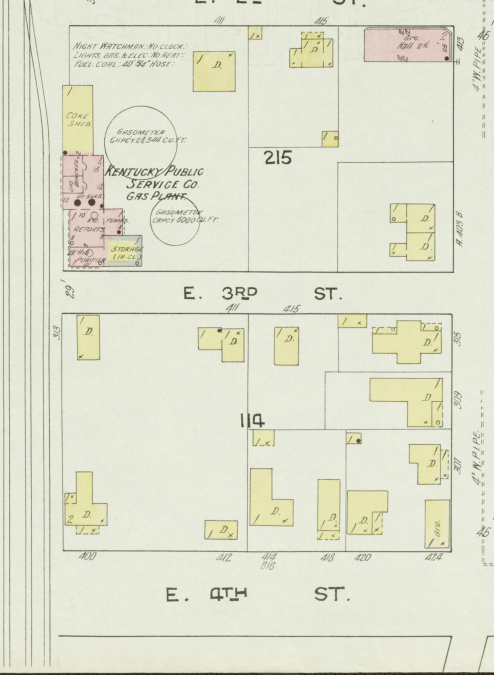
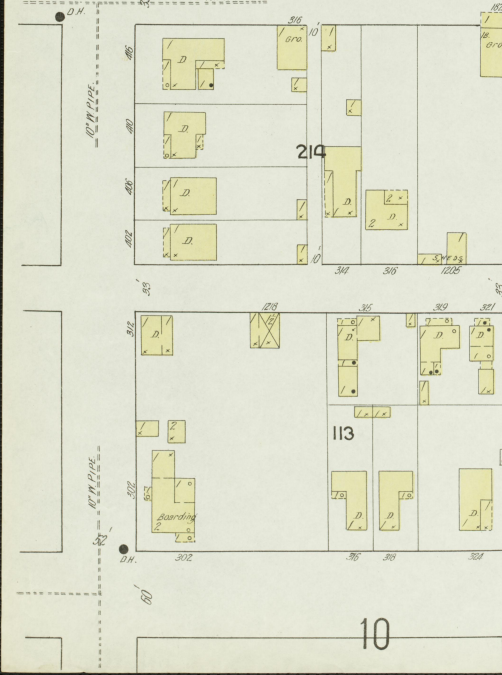
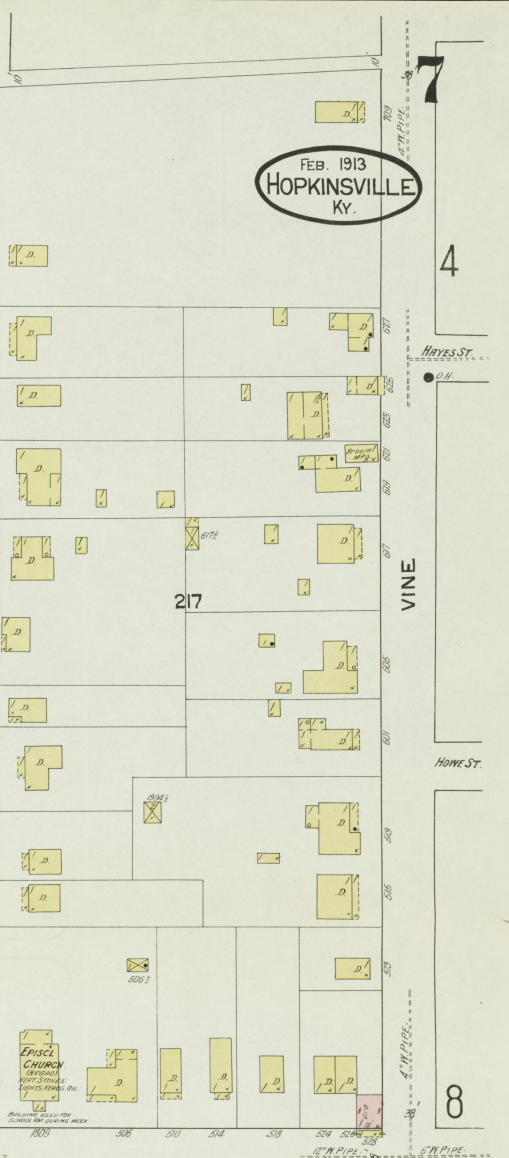
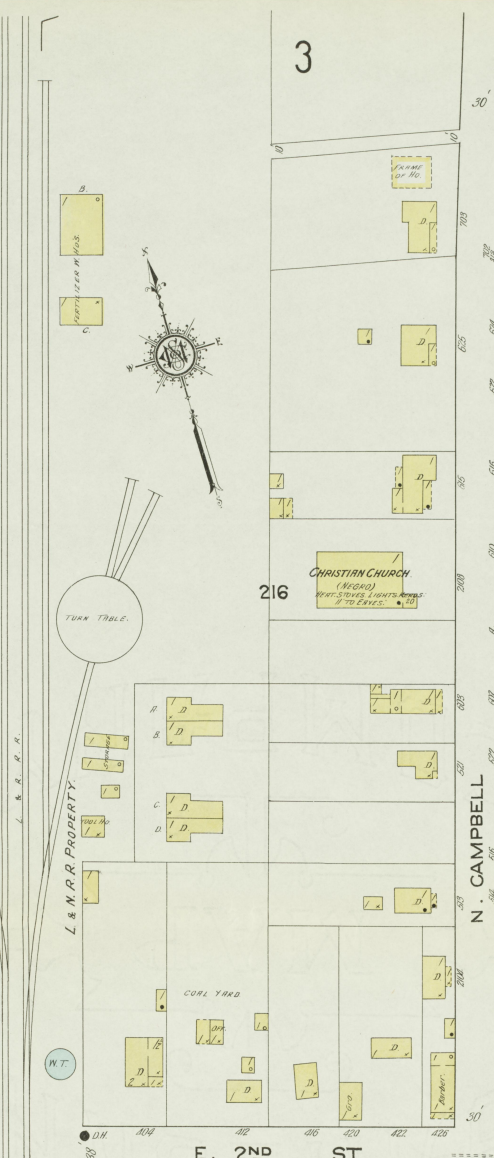
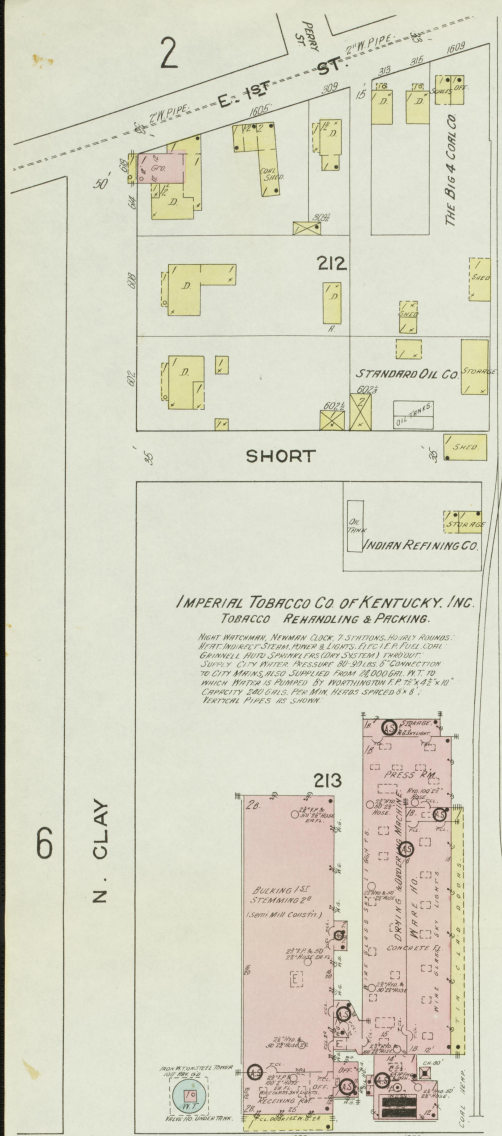
E. 3RD ST.

110

E. 4TH ST.

9

10

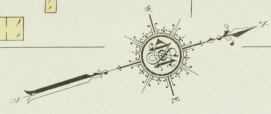


11

E. 4TH ST.

12

60'



222

221

PUBLIC SCHOOL
(New)

SCHOOL ANNEX
New - Street -
No. 100 - 101 - 102 - 103 - 104 - 105 - 106 - 107 - 108 - 109 - 110 - 111 - 112 - 113 - 114 - 115 - 116 - 117 - 118 - 119 - 120 - 121 - 122 - 123 - 124 - 125 - 126 - 127 - 128 - 129 - 130 - 131 - 132 - 133 - 134 - 135 - 136 - 137 - 138 - 139 - 140 - 141 - 142 - 143 - 144 - 145 - 146 - 147 - 148 - 149 - 150 - 151 - 152 - 153 - 154 - 155 - 156 - 157 - 158 - 159 - 160 - 161 - 162 - 163 - 164 - 165 - 166 - 167 - 168 - 169 - 170 - 171 - 172 - 173 - 174 - 175 - 176 - 177 - 178 - 179 - 180 - 181 - 182 - 183 - 184 - 185 - 186 - 187 - 188 - 189 - 190 - 191 - 192 - 193 - 194 - 195 - 196 - 197 - 198 - 199 - 200 - 201 - 202 - 203 - 204 - 205 - 206 - 207 - 208 - 209 - 210 - 211 - 212 - 213 - 214 - 215 - 216 - 217 - 218 - 219 - 220 - 221 - 222 - 223 - 224 - 225 - 226 - 227 - 228 - 229 - 230 - 231 - 232 - 233 - 234 - 235 - 236 - 237 - 238 - 239 - 240 - 241 - 242 - 243 - 244 - 245 - 246 - 247 - 248 - 249 - 250 - 251 - 252 - 253 - 254 - 255 - 256 - 257 - 258 - 259 - 260 - 261 - 262 - 263 - 264 - 265 - 266 - 267 - 268 - 269 - 270 - 271 - 272 - 273 - 274 - 275 - 276 - 277 - 278 - 279 - 280 - 281 - 282 - 283 - 284 - 285 - 286 - 287 - 288 - 289 - 290 - 291 - 292 - 293 - 294 - 295 - 296 - 297 - 298 - 299 - 300 - 301 - 302 - 303 - 304 - 305 - 306 - 307 - 308 - 309 - 310 - 311 - 312 - 313 - 314 - 315 - 316 - 317 - 318 - 319 - 320 - 321 - 322 - 323 - 324 - 325 - 326 - 327 - 328 - 329 - 330 - 331 - 332 - 333 - 334 - 335 - 336 - 337 - 338 - 339 - 340 - 341 - 342 - 343 - 344 - 345 - 346 - 347 - 348 - 349 - 350 - 351 - 352 - 353 - 354 - 355 - 356 - 357 - 358 - 359 - 360 - 361 - 362 - 363 - 364 - 365 - 366 - 367 - 368 - 369 - 370 - 371 - 372 - 373 - 374 - 375 - 376 - 377 - 378 - 379 - 380 - 381 - 382 - 383 - 384 - 385 - 386 - 387 - 388 - 389 - 390 - 391 - 392 - 393 - 394 - 395 - 396 - 397 - 398 - 399 - 400 - 401 - 402 - 403 - 404 - 405 - 406 - 407 - 408 - 409 - 410 - 411 - 412 - 413 - 414 - 415 - 416 - 417 - 418 - 419 - 420 - 421 - 422 - 423 - 424 - 425 - 426 - 427 - 428 - 429 - 430 - 431 - 432 - 433 - 434 - 435 - 436 - 437 - 438 - 439 - 440 - 441 - 442 - 443 - 444 - 445 - 446 - 447 - 448 - 449 - 450 - 451 - 452 - 453 - 454 - 455 - 456 - 457 - 458 - 459 - 460 - 461 - 462 - 463 - 464 - 465 - 466 - 467 - 468 - 469 - 470 - 471 - 472 - 473 - 474 - 475 - 476 - 477 - 478 - 479 - 480 - 481 - 482 - 483 - 484 - 485 - 486 - 487 - 488 - 489 - 490 - 491 - 492 - 493 - 494 - 495 - 496 - 497 - 498 - 499 - 500 - 501 - 502 - 503 - 504 - 505 - 506 - 507 - 508 - 509 - 510 - 511 - 512 - 513 - 514 - 515 - 516 - 517 - 518 - 519 - 520 - 521 - 522 - 523 - 524 - 525 - 526 - 527 - 528 - 529 - 530 - 531 - 532 - 533 - 534 - 535 - 536 - 537 - 538 - 539 - 540 - 541 - 542 - 543 - 544 - 545 - 546 - 547 - 548 - 549 - 550 - 551 - 552 - 553 - 554 - 555 - 556 - 557 - 558 - 559 - 560 - 561 - 562 - 563 - 564 - 565 - 566 - 567 - 568 - 569 - 570 - 571 - 572 - 573 - 574 - 575 - 576 - 577 - 578 - 579 - 580 - 581 - 582 - 583 - 584 - 585 - 586 - 587 - 588 - 589 - 590 - 591 - 592 - 593 - 594 - 595 - 596 - 597 - 598 - 599 - 600 - 601 - 602 - 603 - 604 - 605 - 606 - 607 - 608 - 609 - 610 - 611 - 612 - 613 - 614 - 615 - 616 - 617 - 618 - 619 - 620 - 621 - 622 - 623 - 624 - 625 - 626 - 627 - 628 - 629 - 630 - 631 - 632 - 633 - 634 - 635 - 636 - 637 - 638 - 639 - 640 - 641 - 642 - 643 - 644 - 645 - 646 - 647 - 648 - 649 - 650 - 651 - 652 - 653 - 654 - 655 - 656 - 657 - 658 - 659 - 660 - 661 - 662 - 663 - 664 - 665 - 666 - 667 - 668 - 669 - 670 - 671 - 672 - 673 - 674 - 675 - 676 - 677 - 678 - 679 - 680 - 681 - 682 - 683 - 684 - 685 - 686 - 687 - 688 - 689 - 690 - 691 - 692 - 693 - 694 - 695 - 696 - 697 - 698 - 699 - 700 - 701 - 702 - 703 - 704 - 705 - 706 - 707 - 708 - 709 - 710 - 711 - 712 - 713 - 714 - 715 - 716 - 717 - 718 - 719 - 720 - 721 - 722 - 723 - 724 - 725 - 726 - 727 - 728 - 729 - 730 - 731 - 732 - 733 - 734 - 735 - 736 - 737 - 738 - 739 - 740 - 741 - 742 - 743 - 744 - 745 - 746 - 747 - 748 - 749 - 750 - 751 - 752 - 753 - 754 - 755 - 756 - 757 - 758 - 759 - 760 - 761 - 762 - 763 - 764 - 765 - 766 - 767 - 768 - 769 - 770 - 771 - 772 - 773 - 774 - 775 - 776 - 777 - 778 - 779 - 780 - 781 - 782 - 783 - 784 - 785 - 786 - 787 - 788 - 789 - 790 - 791 - 792 - 793 - 794 - 795 - 796 - 797 - 798 - 799 - 800 - 801 - 802 - 803 - 804 - 805 - 806 - 807 - 808 - 809 - 810 - 811 - 812 - 813 - 814 - 815 - 816 - 817 - 818 - 819 - 820 - 821 - 822 - 823 - 824 - 825 - 826 - 827 - 828 - 829 - 830 - 831 - 832 - 833 - 834 - 835 - 836 - 837 - 838 - 839 - 840 - 841 - 842 - 843 - 844 - 845 - 846 - 847 - 848 - 849 - 850 - 851 - 852 - 853 - 854 - 855 - 856 - 857 - 858 - 859 - 860 - 861 - 862 - 863 - 864 - 865 - 866 - 867 - 868 - 869 - 870 - 871 - 872 - 873 - 874 - 875 - 876 - 877 - 878 - 879 - 880 - 881 - 882 - 883 - 884 - 885 - 886 - 887 - 888 - 889 - 890 - 891 - 892 - 893 - 894 - 895 - 896 - 897 - 898 - 899 - 900 - 901 - 902 - 903 - 904 - 905 - 906 - 907 - 908 - 909 - 910 - 911 - 912 - 913 - 914 - 915 - 916 - 917 - 918 - 919 - 920 - 921 - 922 - 923 - 924 - 925 - 926 - 927 - 928 - 929 - 930 - 931 - 932 - 933 - 934 - 935 - 936 - 937 - 938 - 939 - 940 - 941 - 942 - 943 - 944 - 945 - 946 - 947 - 948 - 949 - 950 - 951 - 952 - 953 - 954 - 955 - 956 - 957 - 958 - 959 - 960 - 961 - 962 - 963 - 964 - 965 - 966 - 967 - 968 - 969 - 970 - 971 - 972 - 973 - 974 - 975 - 976 - 977 - 978 - 979 - 980 - 981 - 982 - 983 - 984 - 985 - 986 - 987 - 988 - 989 - 990 - 991 - 992 - 993 - 994 - 995 - 996 - 997 - 998 - 999 - 1000

MECHANIC

310

FRONTING

BROWN

13 St.

7

VINE

FEB. 1913
HOPKINSVILLE
KY.

8

E. 2ND ST.

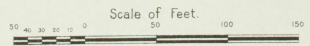
HOWE

HAYES

MECHANIC

309

308



Scale of Feet.
50 100 150

5

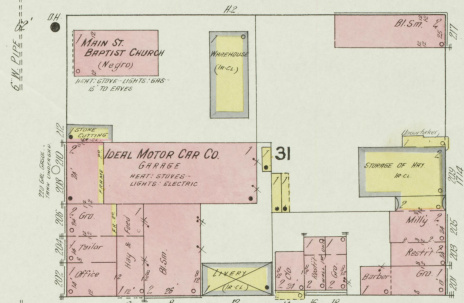
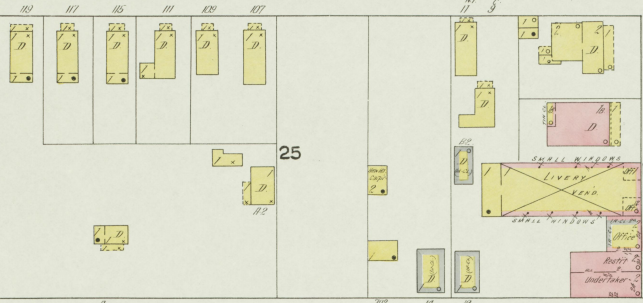
6 FEB. 1913. HOPKINSVILLE KY.

9



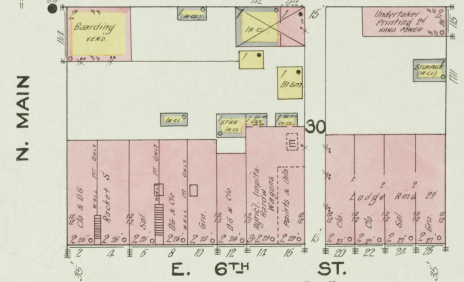
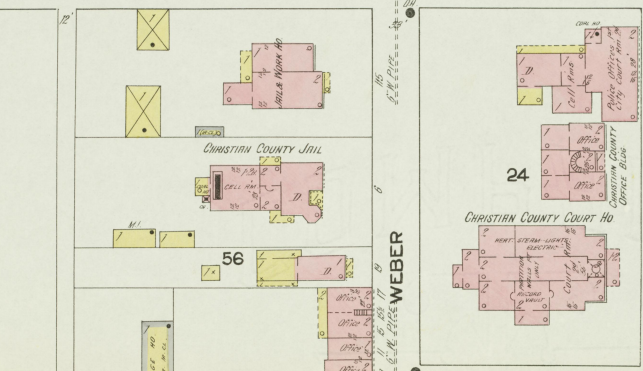
W. 4TH ST.

E. 4TH ST.



W. 5TH ST.

E. 5TH ST.



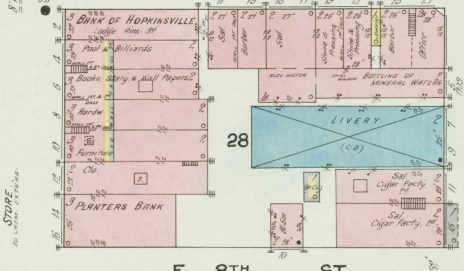
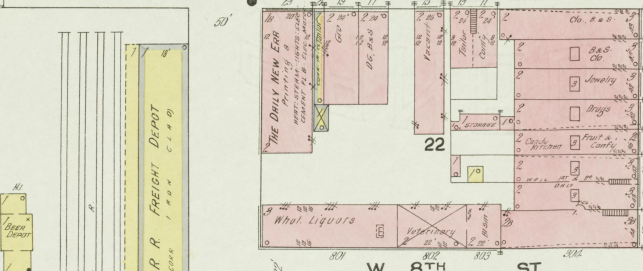
WEBER

N. MAIN

N. VIRGINIA

W. 7TH ST.

E. 6TH ST.



COURT PL

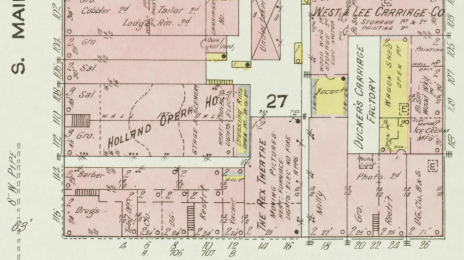
E. 6TH ST.

10

31

W. 8TH ST.

E. 7TH ST.



S. WATER

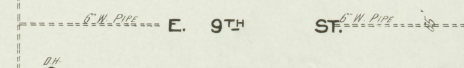
S. MAIN

VIRGINIA

ILLINOIS CENTRAL R R FREIGHT DEPOT

W. 9TH ST.

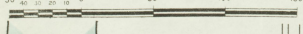
E. 8TH ST.

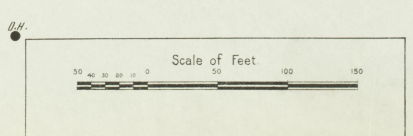
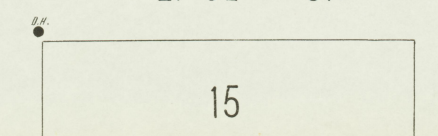
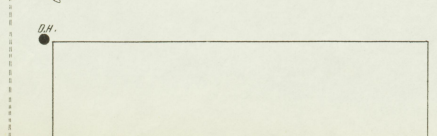
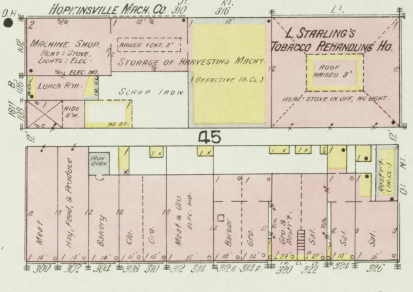
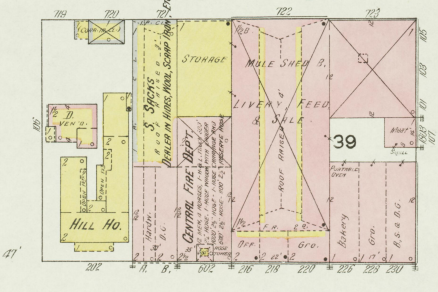
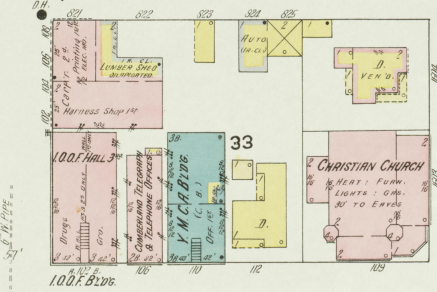
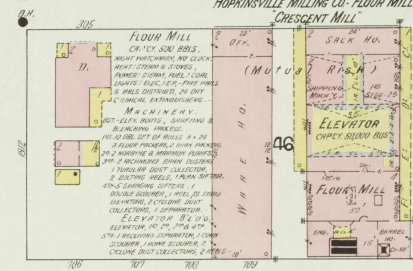
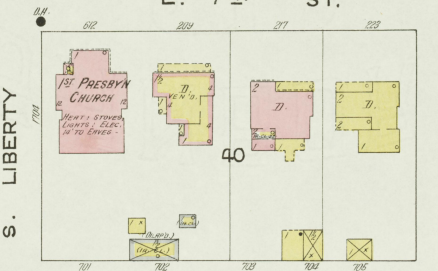
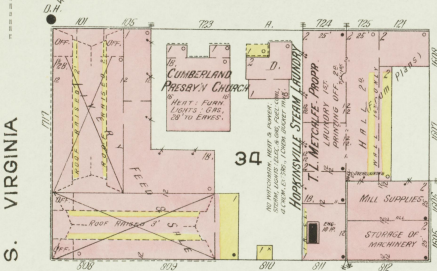
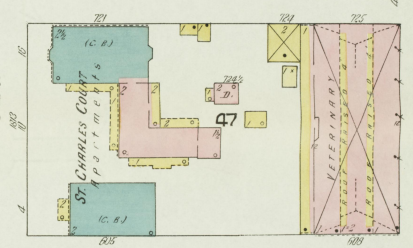
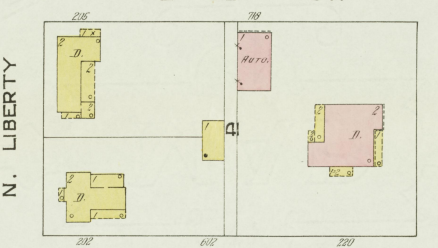
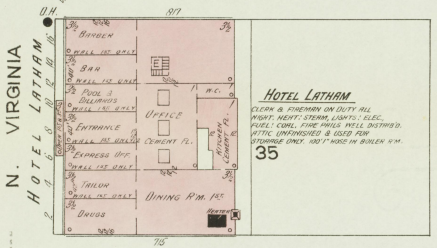
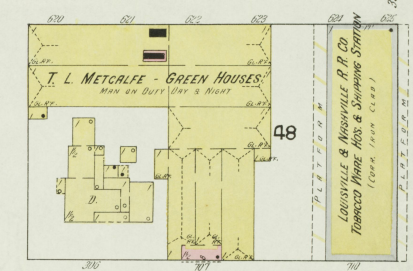
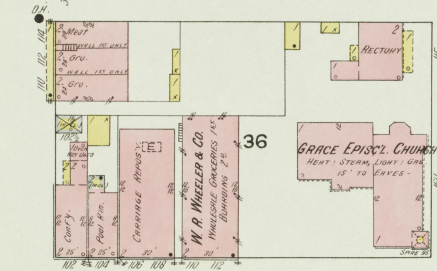
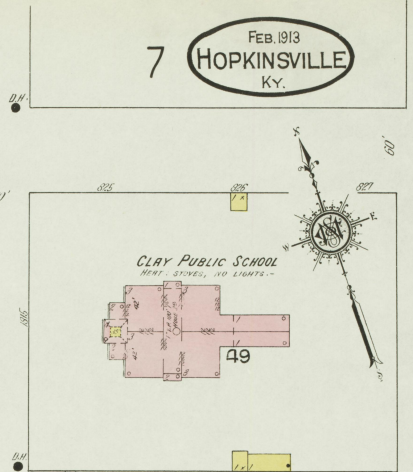
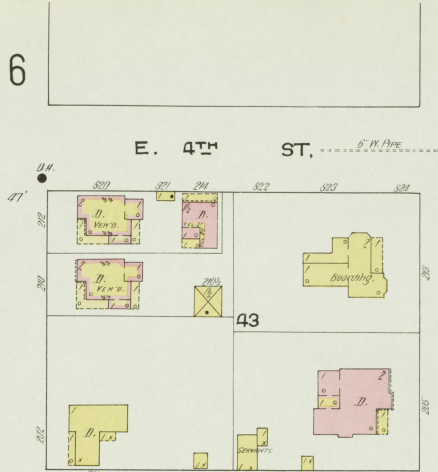
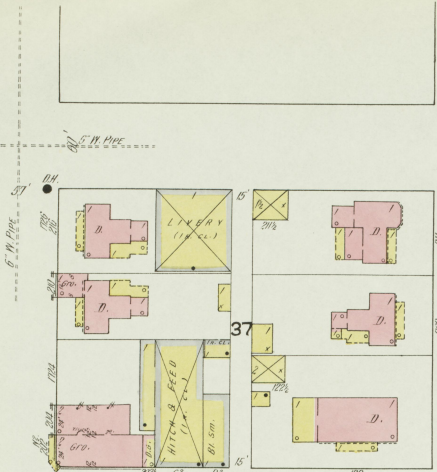


14

S.

Scale of Feet.





N. VIRGINIA

S. VIRGINIA

N. LIBERTY

S. LIBERTY

N. CLAY

S. CLAY

N. LIBERTY & HOPKINSVILLE R. R.

E. 4th ST.

E. 5th ST.

E. 6th ST.

E. 7th ST.

E. 8th ST.

E. 9th ST.

CLAY PUBLIC SCHOOL

I. L. METCALFE - GREEN HOUSES

HOTEL LATHAM

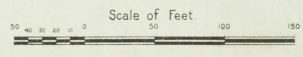
CUMBERLAND PRESBYTERIAN CHURCH

CHRISTIAN CHURCH

HOPKINSVILLE MILLING CO. FLOUR MILL

L. STARNING'S TOBACCO REFINING HO.

15



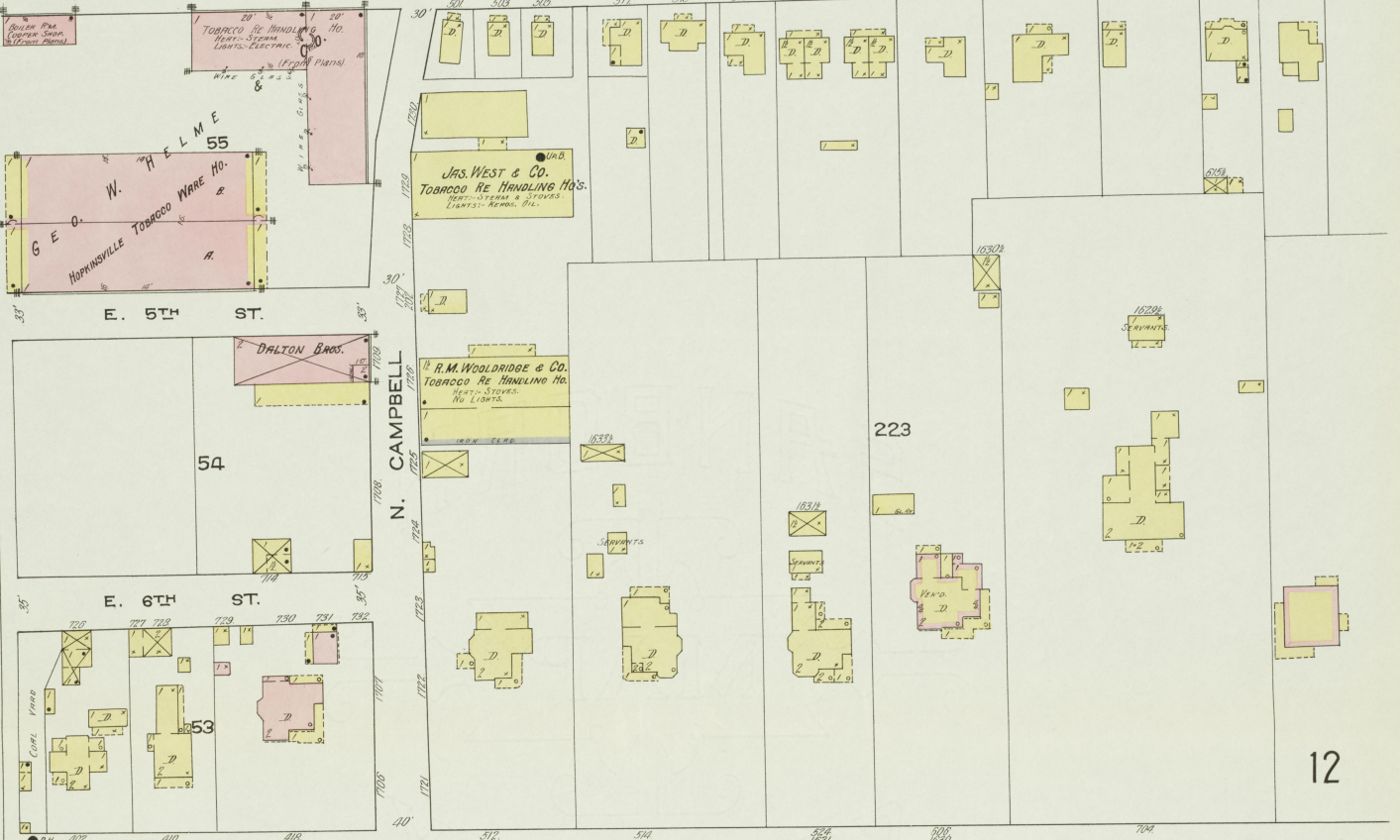
7

8

11

FEB. 1913
HOPKINSVILLE
KY.

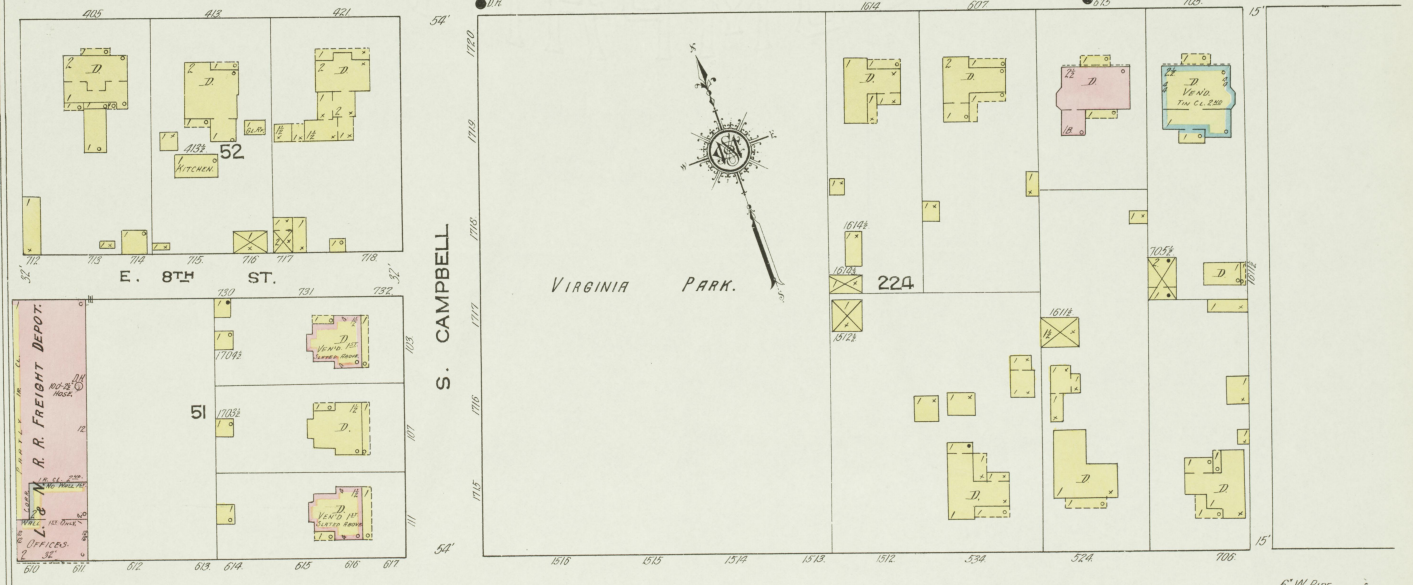
E. 4TH ST.



10

12

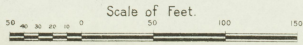
E. 7TH ST.



VIRGINIA PARK.

S. CAMPBELL

E. 9TH ST.



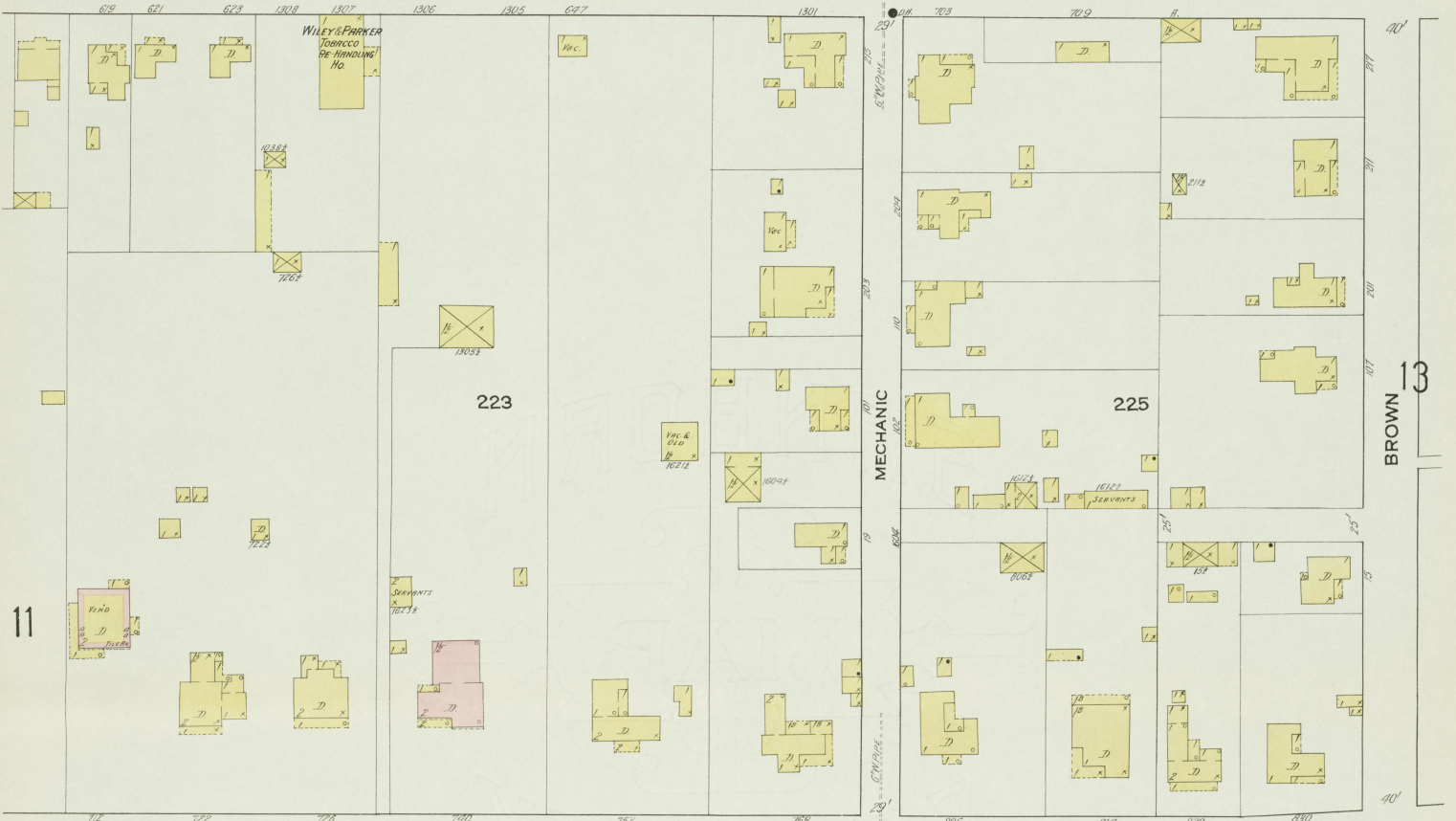
16

17

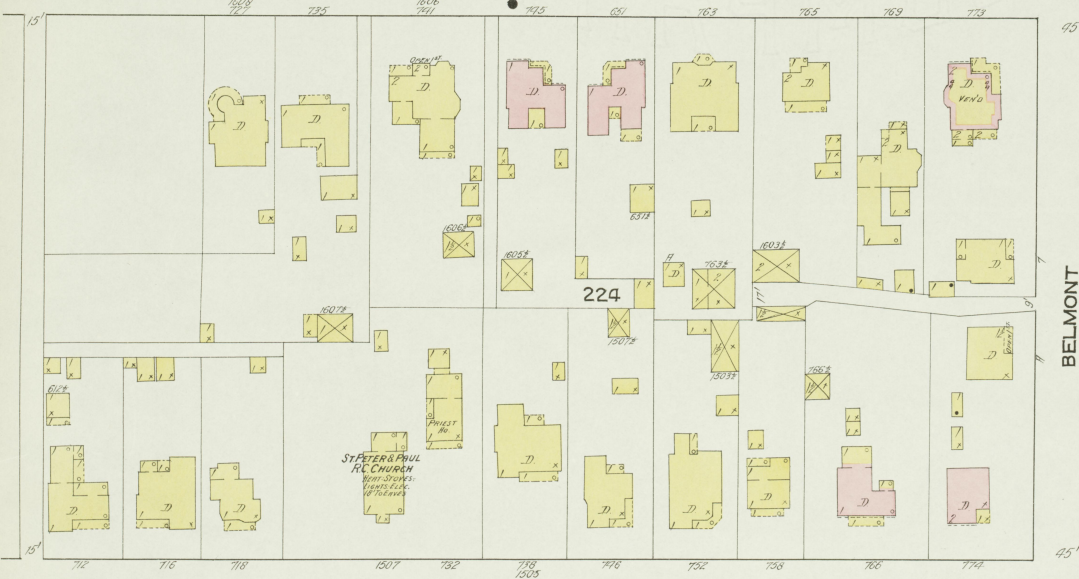
COLEMAN ST.

WAGNER ST.

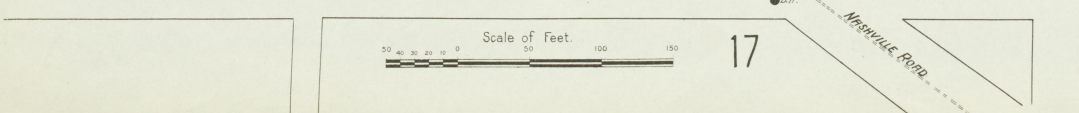
E. 4TH ST.



E. 7TH ST.



E. 9TH ST.



COLLEGE CAMPUS

FEB 1913
HOPKINSVILLE
Ky.

309

E. 2ND ST.

8

E. 4TH ST.

THOMPSON

2A

E. 7TH ST.

BROWN

3A

12

4A

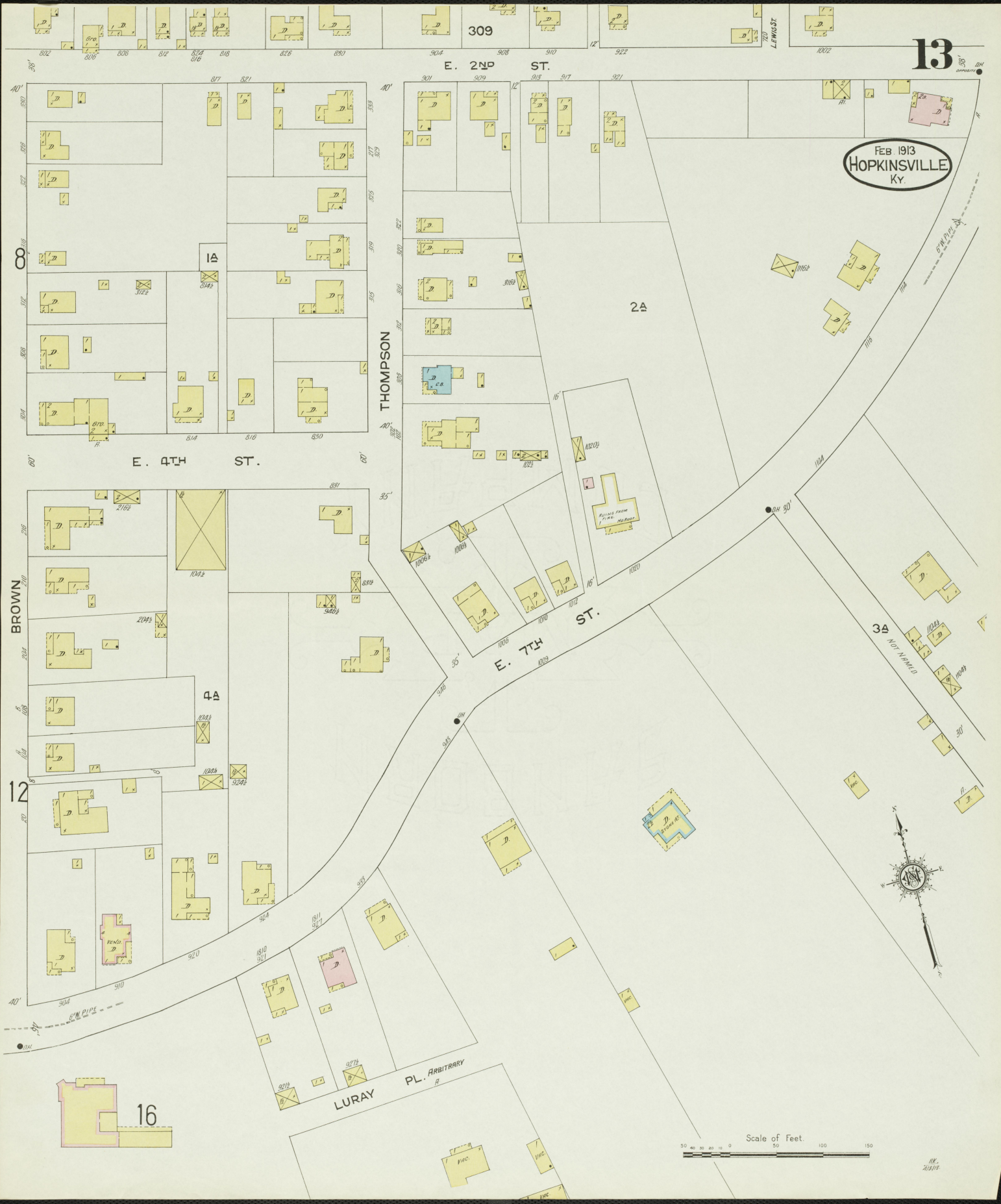
16

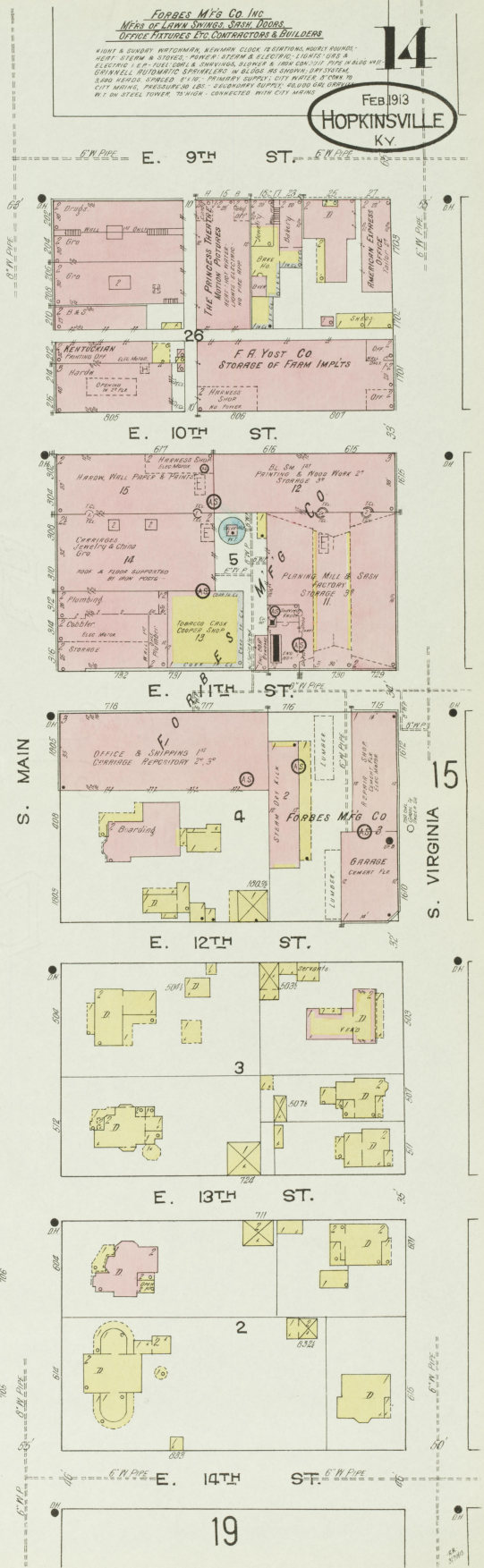
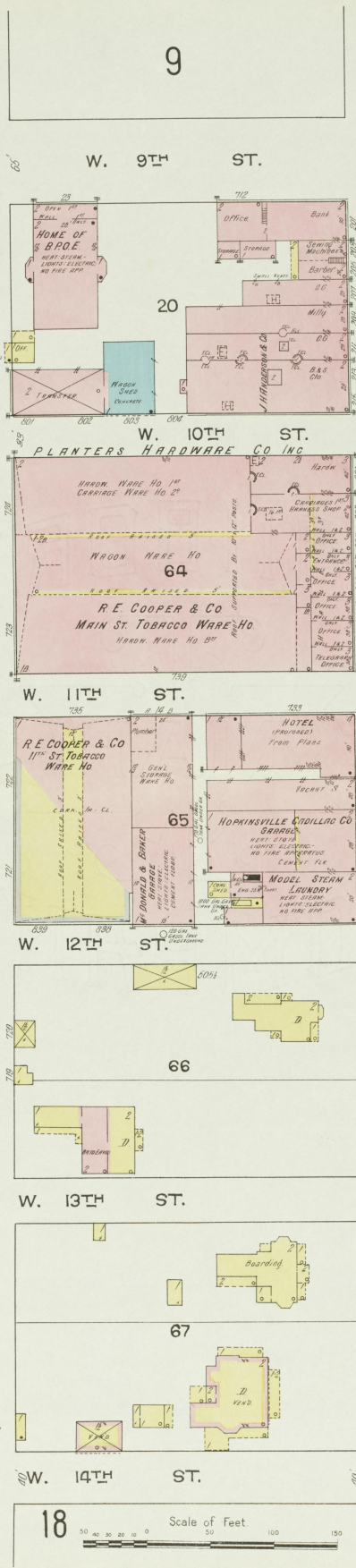
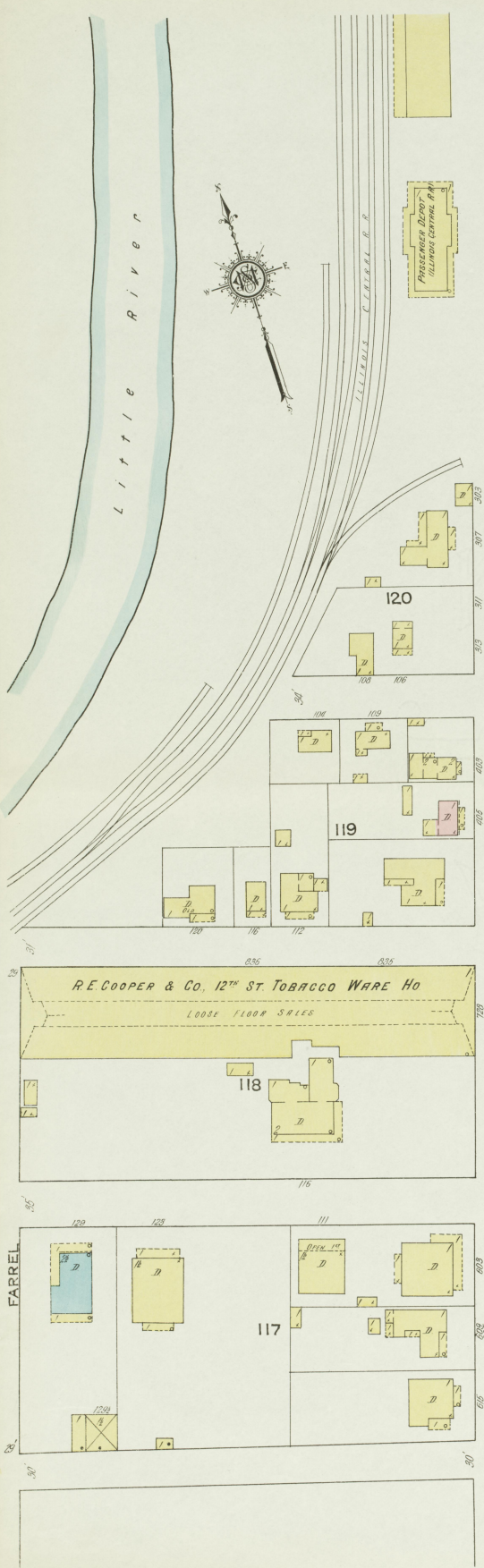
LURAY PL. ARBITRARY



Scale of Feet.
50 100 150

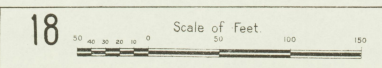
REV. 5/15/13



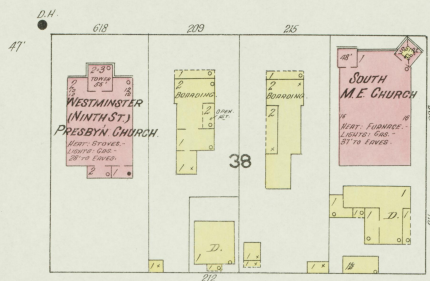


FORBES MFG CO INC
MFG OF LUMBER SHEDS, BRICK DOCKS
OFFICE FITTINGS ETC CONTRACTORS & BUILDERS

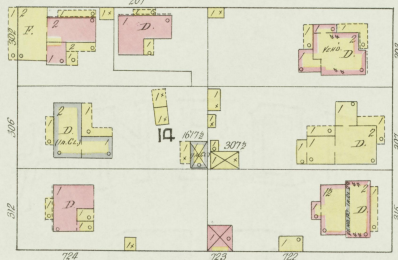
14
 FEB 1913
HOPKINSVILLE
 KY



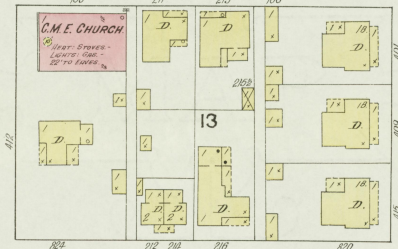
E. 9TH ST.



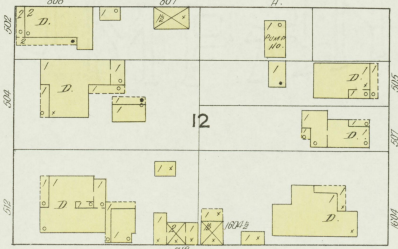
E. 10TH ST.



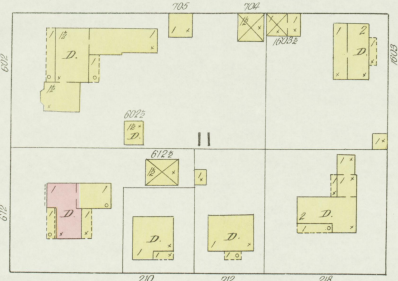
E. 11TH ST.



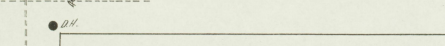
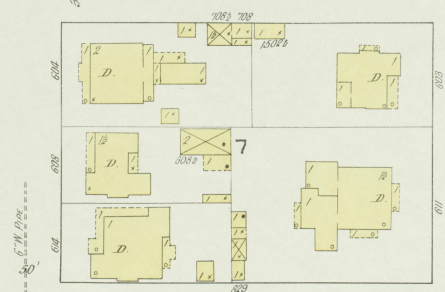
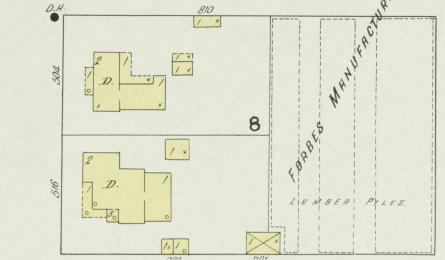
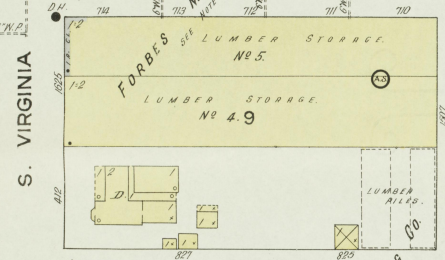
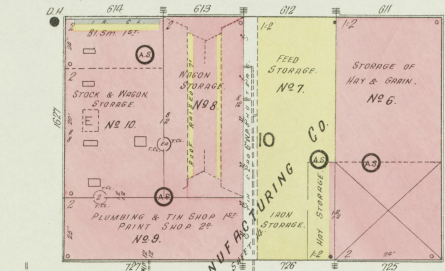
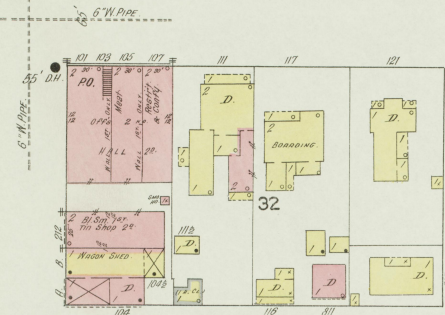
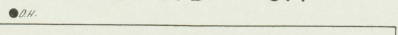
E. 12TH ST.



E. 13TH ST.



E. 14TH ST.

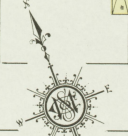
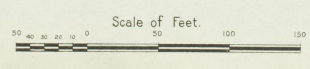


S. VIRGINIA

S. LIBERTY

S. CLAY

16



LOUISVILLE & NASHVILLE R.R.

FEB 1913
HOPKINSVILLE
Ky.

PEACE PARK
50

JAS. WEST & CO
NEW ENTERPRISE
TOBACCO WARE HO.
ROOF RAISED 3'
HEAT STOVE IN OFF. LIGHT. GAS
ROOF SUPPORTED BY IRON PIER.

121

JAS. WEST & CO
PLANTERS TOBACCO W. HO.
NO HEAT - NO LIGHT.
ROOF RAISED 3'
(CORR. IRON CLAD)

60

F. W. DABNEY
TOBACCO WARE HO.
NO HEAT - NO LIGHT.

61

F. W. DABNEY
TOBACCO RE-HANDLING HO.
HEAT, STEAM & STOVE IN OFF.
LIGHT. ELEC. FIRE PAILS &
BELL.

C. & UNDERWOOD
COAL YARD

122

S. CAMPBELL

COLEMAN

123, 124, 125, 62, 63, 201, 202, 311

E. 14TH ST., E. 13TH ST., E. 12TH ST., E. 11TH ST., E. 10TH ST., E. 9TH ST.

17 WALNUT

12

13

McLEARN COLLEGE

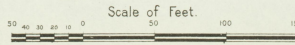
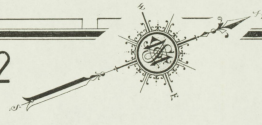
HEAT, STEAM, LIGHTS, ELEC.

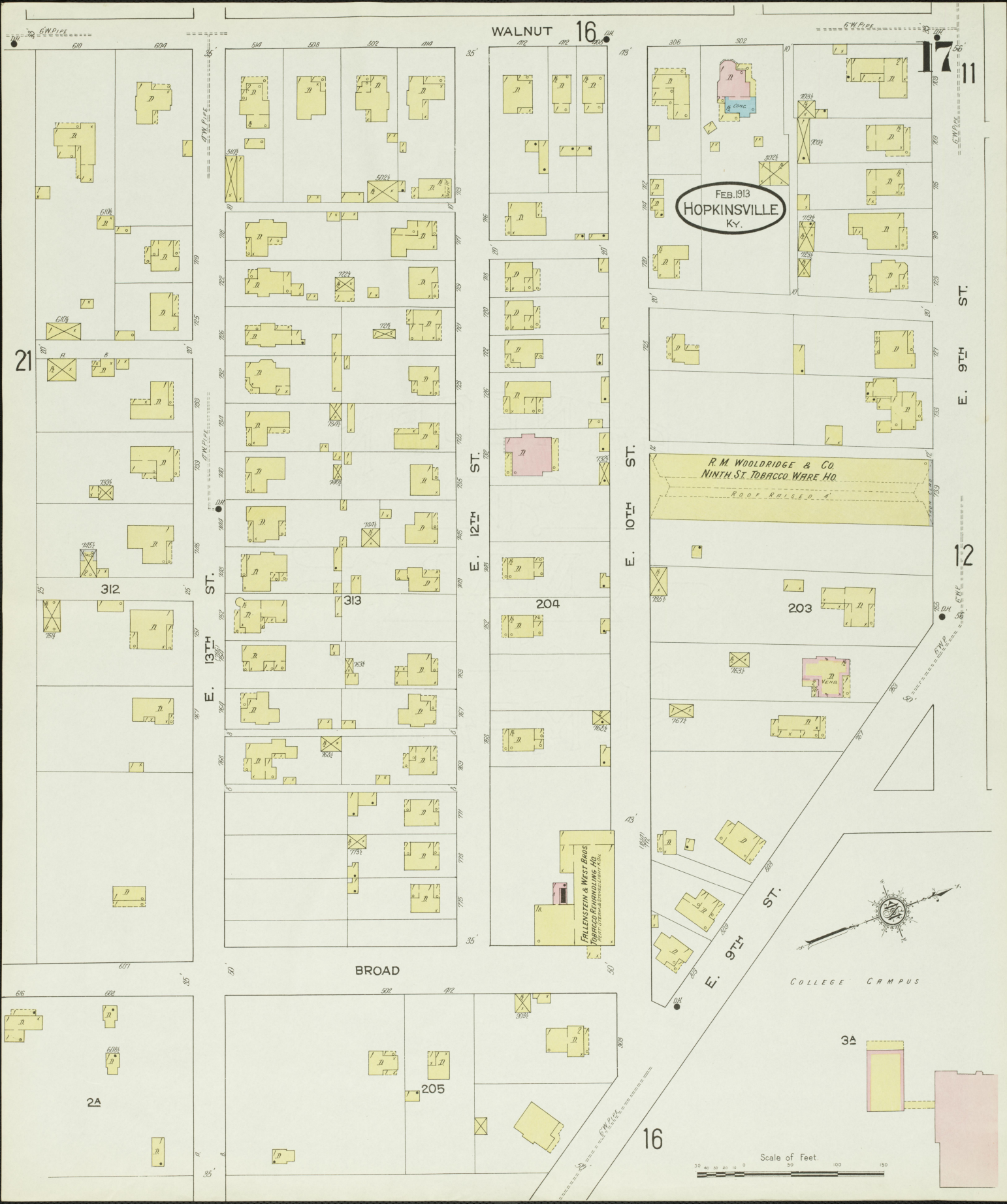
3A

STANISLUM & HALL

BOYS' DORMITORY

VEN'D





WALNUT 16

17
11

FEB. 1913
HOPKINSVILLE
Ky.

21

E. 9TH ST.

E. 12TH ST.

E. 10TH ST.

12

E. 13TH ST.

312

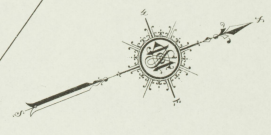
313

204

203

R.M. WOOLDRIDGE & CO.
NINTH ST. TOBACCO WARE HO.
ROOF RAISED

FALLENSTEIN & WEST BROS.
TOBACCO REPACKING HO.
1007 S. STANBROOK ST. (4th Flr.)



COLLEGE CAMPUS

BROAD

Scale of Feet.
0 50 100 150

16

3A

2A

205

FEB 1913
HOPKINSVILLE
KY.



W. 17TH ST.

W. 16TH ST.

CANTON

R.E. COOPER
TOBACCO
REHANDLING HO
WATER TOWER & STORES
100' x 50' BUILDS

J. FELLOTT
TOBACCO REHANDLING HO
100' x 50' BUILDS

FARREL

69

COLLEGE CAMPUS

BETHEL FEMALE COLLEGE
STEAM HEAT LIGHTS ELEC GURY CASE
1894-5

117

S. WATER

W. 14TH ST.

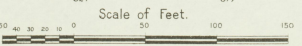
14

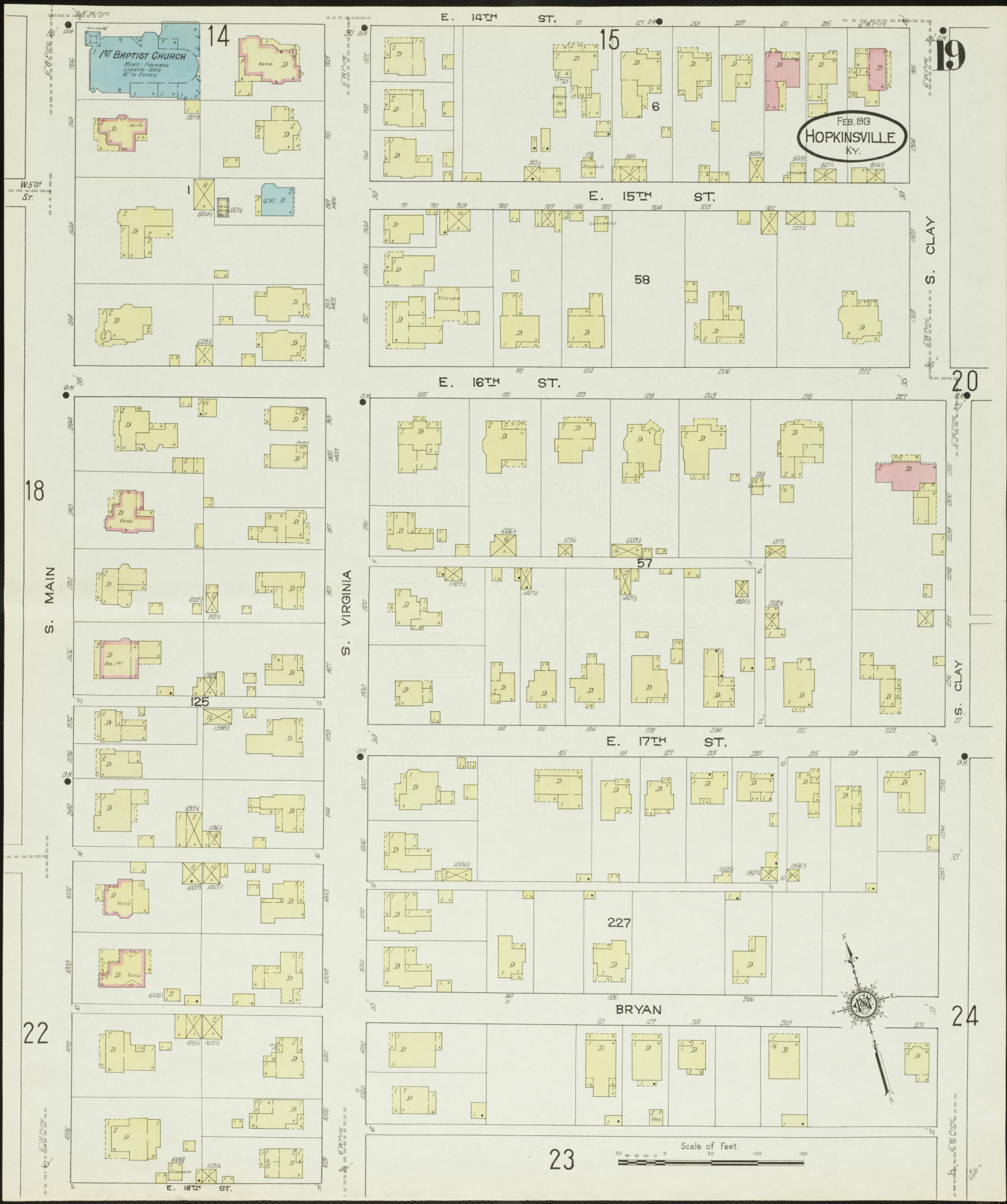
69

68

S. MAIN

19



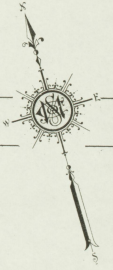


FEB. 1913
HOPKINSVILLE
Ky.

E. 17TH ST.

BRYAN

Scale of Feet.
0 50 100 150



18

22

19

20

24

14

15

6

58

125

57

227

23

E. 14TH ST.

E. 15TH ST.

E. 16TH ST.

E. 17TH ST.

E. 18TH ST.

W 5TH ST.

S. MAIN

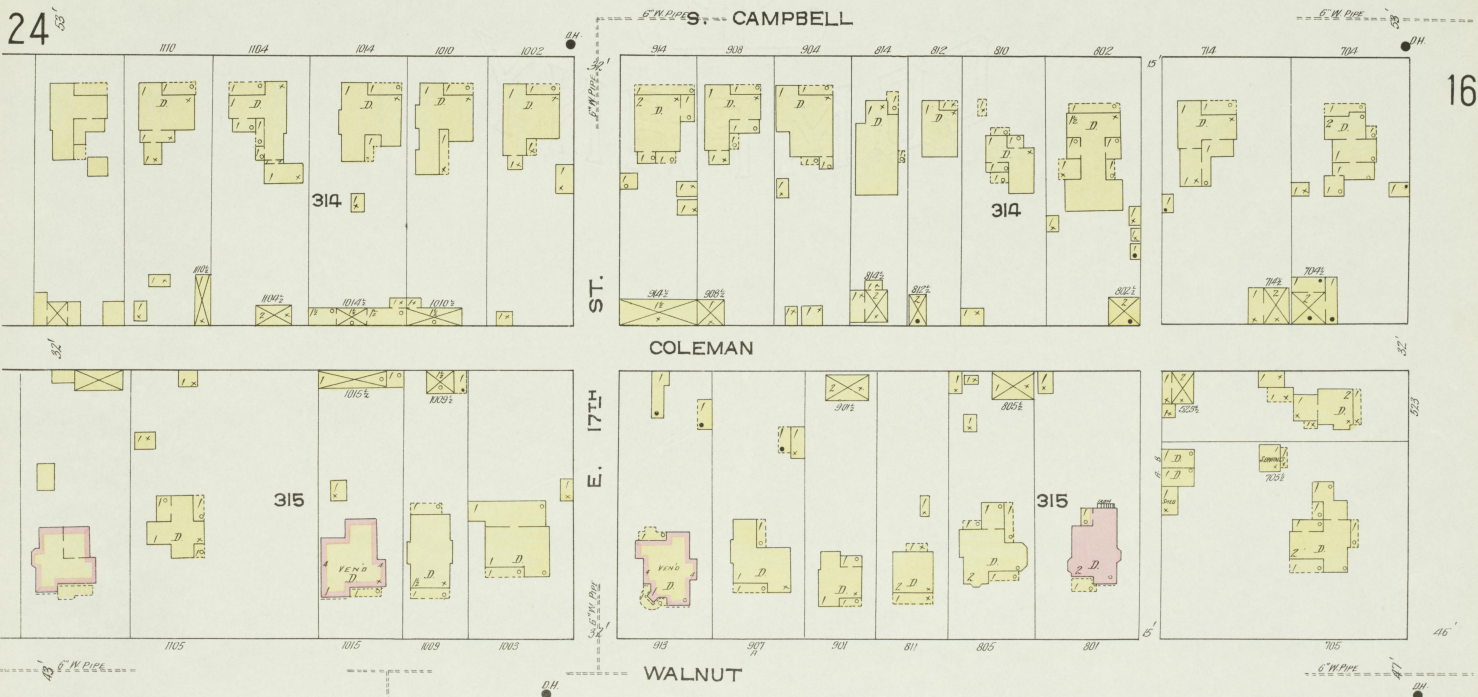
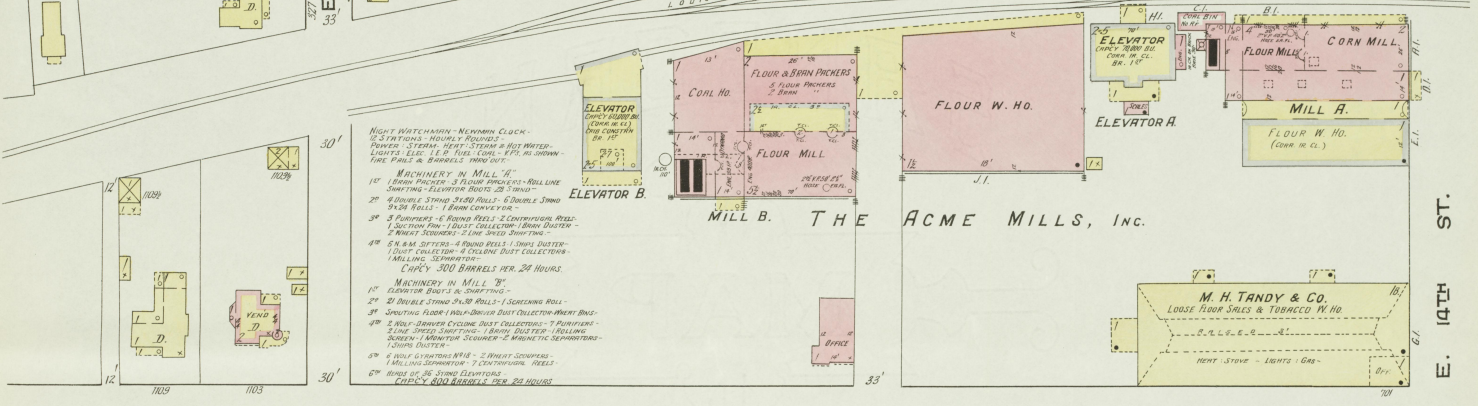
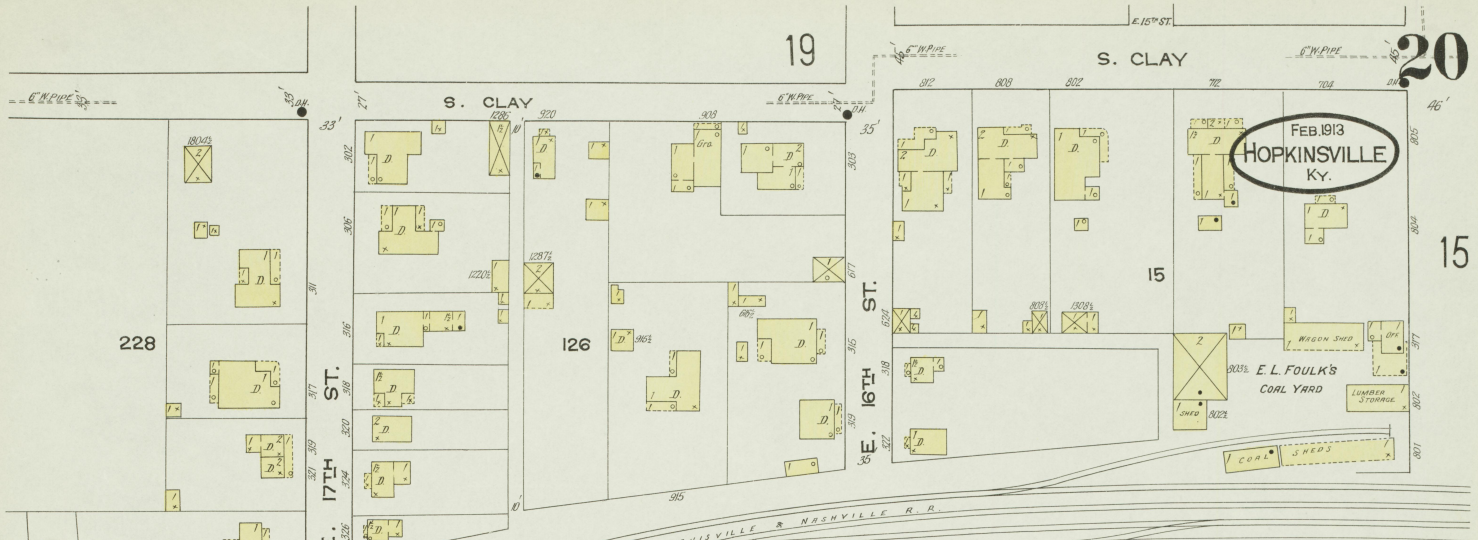
S. VIRGINIA

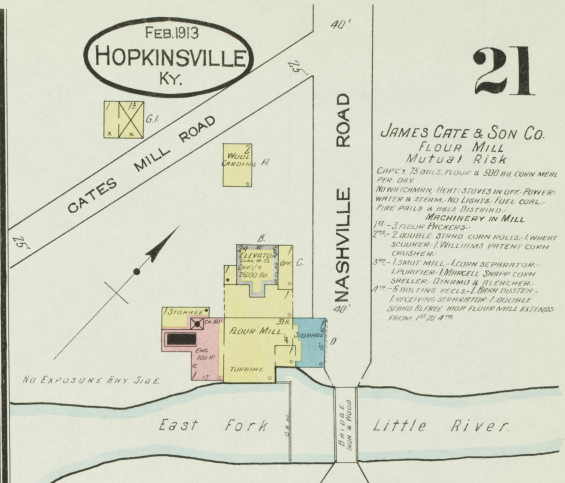
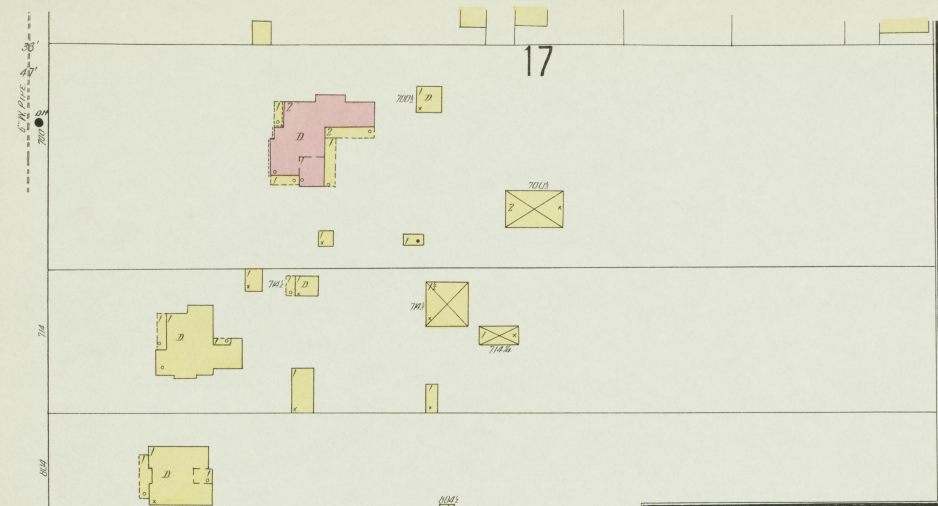
S. CLAY

S. CLAY

1ST BAPTIST CHURCH
HERT. FURNACE
LIGHTS, GAS
W. TO CONVEY

Lot numbers: 201, 202, 203, 204, 205, 206, 207, 208, 209, 210, 211, 212, 213, 214, 215, 216, 217, 218, 219, 220, 221, 222, 223, 224, 225, 226, 227, 228, 229, 230, 231, 232, 233, 234, 235, 236, 237, 238, 239, 240, 241, 242, 243, 244, 245, 246, 247, 248, 249, 250, 251, 252, 253, 254, 255, 256, 257, 258, 259, 260, 261, 262, 263, 264, 265, 266, 267, 268, 269, 270, 271, 272, 273, 274, 275, 276, 277, 278, 279, 280, 281, 282, 283, 284, 285, 286, 287, 288, 289, 290, 291, 292, 293, 294, 295, 296, 297, 298, 299, 300, 301, 302, 303, 304, 305, 306, 307, 308, 309, 310, 311, 312, 313, 314, 315, 316, 317, 318, 319, 320, 321, 322, 323, 324, 325, 326, 327, 328, 329, 330, 331, 332, 333, 334, 335, 336, 337, 338, 339, 340, 341, 342, 343, 344, 345, 346, 347, 348, 349, 350, 351, 352, 353, 354, 355, 356, 357, 358, 359, 360, 361, 362, 363, 364, 365, 366, 367, 368, 369, 370, 371, 372, 373, 374, 375, 376, 377, 378, 379, 380, 381, 382, 383, 384, 385, 386, 387, 388, 389, 390, 391, 392, 393, 394, 395, 396, 397, 398, 399, 400, 401, 402, 403, 404, 405, 406, 407, 408, 409, 410, 411, 412, 413, 414, 415, 416, 417, 418, 419, 420, 421, 422, 423, 424, 425, 426, 427, 428, 429, 430, 431, 432, 433, 434, 435, 436, 437, 438, 439, 440, 441, 442, 443, 444, 445, 446, 447, 448, 449, 450, 451, 452, 453, 454, 455, 456, 457, 458, 459, 460, 461, 462, 463, 464, 465, 466, 467, 468, 469, 470, 471, 472, 473, 474, 475, 476, 477, 478, 479, 480, 481, 482, 483, 484, 485, 486, 487, 488, 489, 490, 491, 492, 493, 494, 495, 496, 497, 498, 499, 500, 501, 502, 503, 504, 505, 506, 507, 508, 509, 510, 511, 512, 513, 514, 515, 516, 517, 518, 519, 520, 521, 522, 523, 524, 525, 526, 527, 528, 529, 530, 531, 532, 533, 534, 535, 536, 537, 538, 539, 540, 541, 542, 543, 544, 545, 546, 547, 548, 549, 550, 551, 552, 553, 554, 555, 556, 557, 558, 559, 560, 561, 562, 563, 564, 565, 566, 567, 568, 569, 570, 571, 572, 573, 574, 575, 576, 577, 578, 579, 580, 581, 582, 583, 584, 585, 586, 587, 588, 589, 590, 591, 592, 593, 594, 595, 596, 597, 598, 599, 600, 601, 602, 603, 604, 605, 606, 607, 608, 609, 610, 611, 612, 613, 614, 615, 616, 617, 618, 619, 620, 621, 622, 623, 624, 625, 626, 627, 628, 629, 630, 631, 632, 633, 634, 635, 636, 637, 638, 639, 640, 641, 642, 643, 644, 645, 646, 647, 648, 649, 650, 651, 652, 653, 654, 655, 656, 657, 658, 659, 660, 661, 662, 663, 664, 665, 666, 667, 668, 669, 670, 671, 672, 673, 674, 675, 676, 677, 678, 679, 680, 681, 682, 683, 684, 685, 686, 687, 688, 689, 690, 691, 692, 693, 694, 695, 696, 697, 698, 699, 700, 701, 702, 703, 704, 705, 706, 707, 708, 709, 710, 711, 712, 713, 714, 715, 716, 717, 718, 719, 720, 721, 722, 723, 724, 725, 726, 727, 728, 729, 730, 731, 732, 733, 734, 735, 736, 737, 738, 739, 740, 741, 742, 743, 744, 745, 746, 747, 748, 749, 750, 751, 752, 753, 754, 755, 756, 757, 758, 759, 760, 761, 762, 763, 764, 765, 766, 767, 768, 769, 770, 771, 772, 773, 774, 775, 776, 777, 778, 779, 780, 781, 782, 783, 784, 785, 786, 787, 788, 789, 790, 791, 792, 793, 794, 795, 796, 797, 798, 799, 800, 801, 802, 803, 804, 805, 806, 807, 808, 809, 810, 811, 812, 813, 814, 815, 816, 817, 818, 819, 820, 821, 822, 823, 824, 825, 826, 827, 828, 829, 830, 831, 832, 833, 834, 835, 836, 837, 838, 839, 840, 841, 842, 843, 844, 845, 846, 847, 848, 849, 850, 851, 852, 853, 854, 855, 856, 857, 858, 859, 860, 861, 862, 863, 864, 865, 866, 867, 868, 869, 870, 871, 872, 873, 874, 875, 876, 877, 878, 879, 880, 881, 882, 883, 884, 885, 886, 887, 888, 889, 890, 891, 892, 893, 894, 895, 896, 897, 898, 899, 900, 901, 902, 903, 904, 905, 906, 907, 908, 909, 910, 911, 912, 913, 914, 915, 916, 917, 918, 919, 920, 921, 922, 923, 924, 925, 926, 927, 928, 929, 930, 931, 932, 933, 934, 935, 936, 937, 938, 939, 940, 941, 942, 943, 944, 945, 946, 947, 948, 949, 950, 951, 952, 953, 954, 955, 956, 957, 958, 959, 960, 961, 962, 963, 964, 965, 966, 967, 968, 969, 970, 971, 972, 973, 974, 975, 976, 977, 978, 979, 980, 981, 982, 983, 984, 985, 986, 987, 988, 989, 990, 991, 992, 993, 994, 995, 996, 997, 998, 999, 1000





21

JAMES CATE & SON CO.
FLOUR MILL
MUTUAL RISK

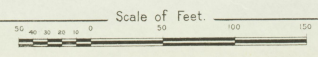
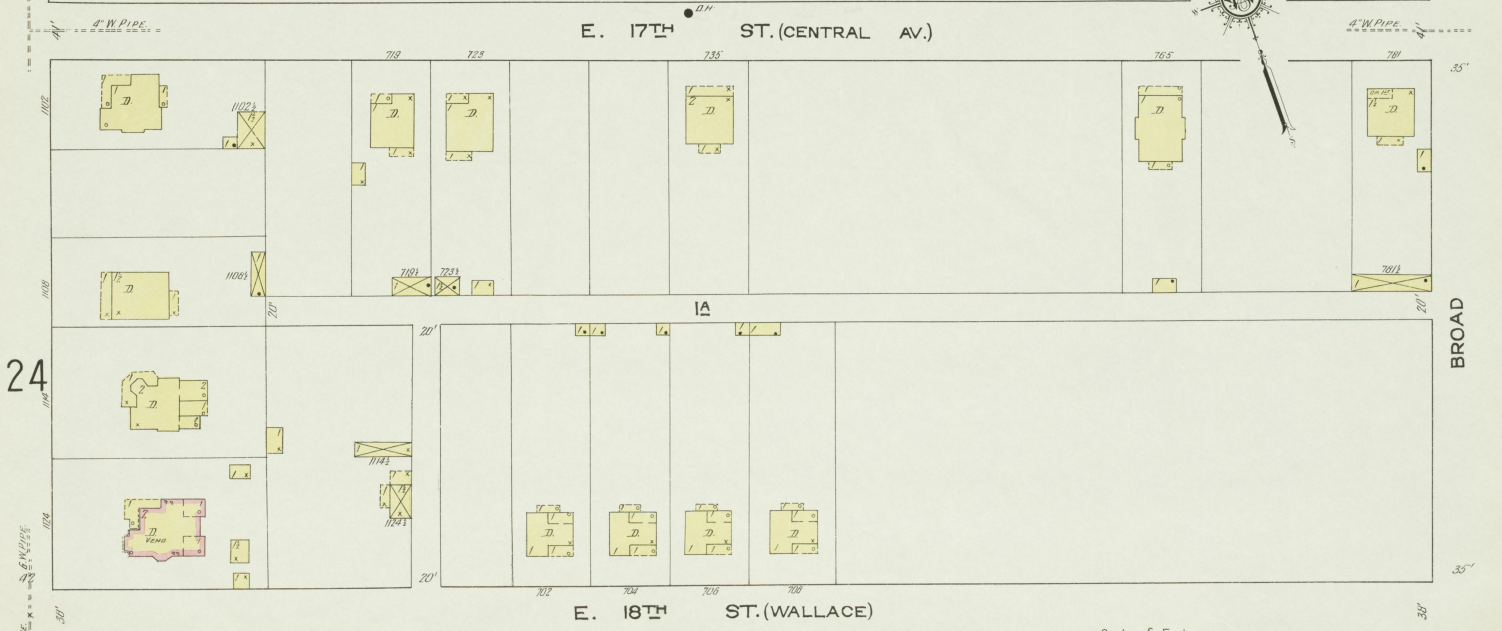
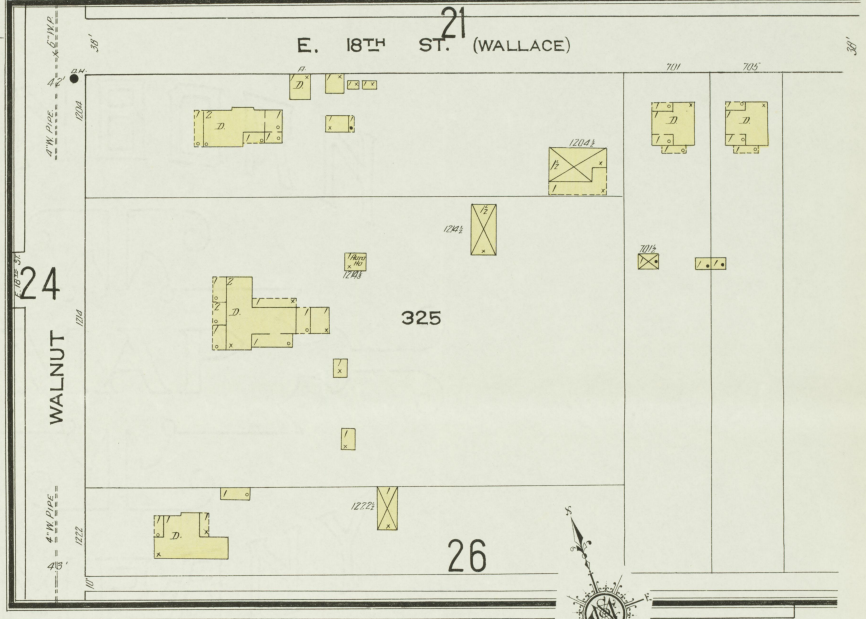
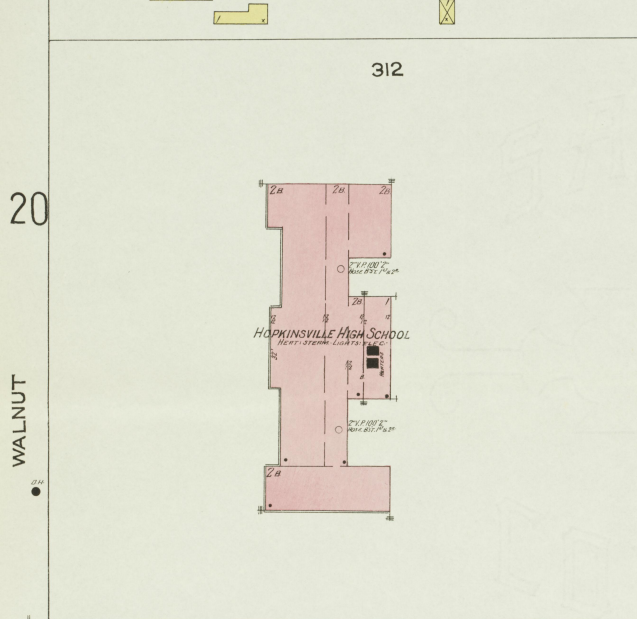
CAPACITY 25,000 LBS. FLOUR & 500,000 COGN MEAL
PER DAY

WATERWORKS: HEAT STOVES IN OFF. PUMPS;
WATER & STEAM. NO LIGHTS. FUEL COAL.
FIRE PUMP & BELL (DISPENSING)

MACHINERY IN MILL

1st - STEEL FRICKS
2nd - STEEL STONES COGN PULLS. 1 WHEAT
SCOURER. 1 WILLIAMS PATENT COGN
CRACKER

3rd - LOUPE MILL. FLOUR SEPARATOR.
LOUPE MILL. BRANNE'S SHARP TOOTH
SMALLER. DYNAMO & BLANCHER.
4th - BRANNE'S MILL. BRANNE'S MILL.
1 SOLING'S SEPARATOR. 1 LOUPE.
STEAM FLYING HIGH FLOUR MILL EXTENDS
FROM 11 1/2 4th



22

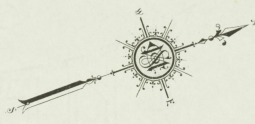
FEB. 1913
HOPKINSVILLE
KY.

KENTON

CYPRESS

HIGH

18

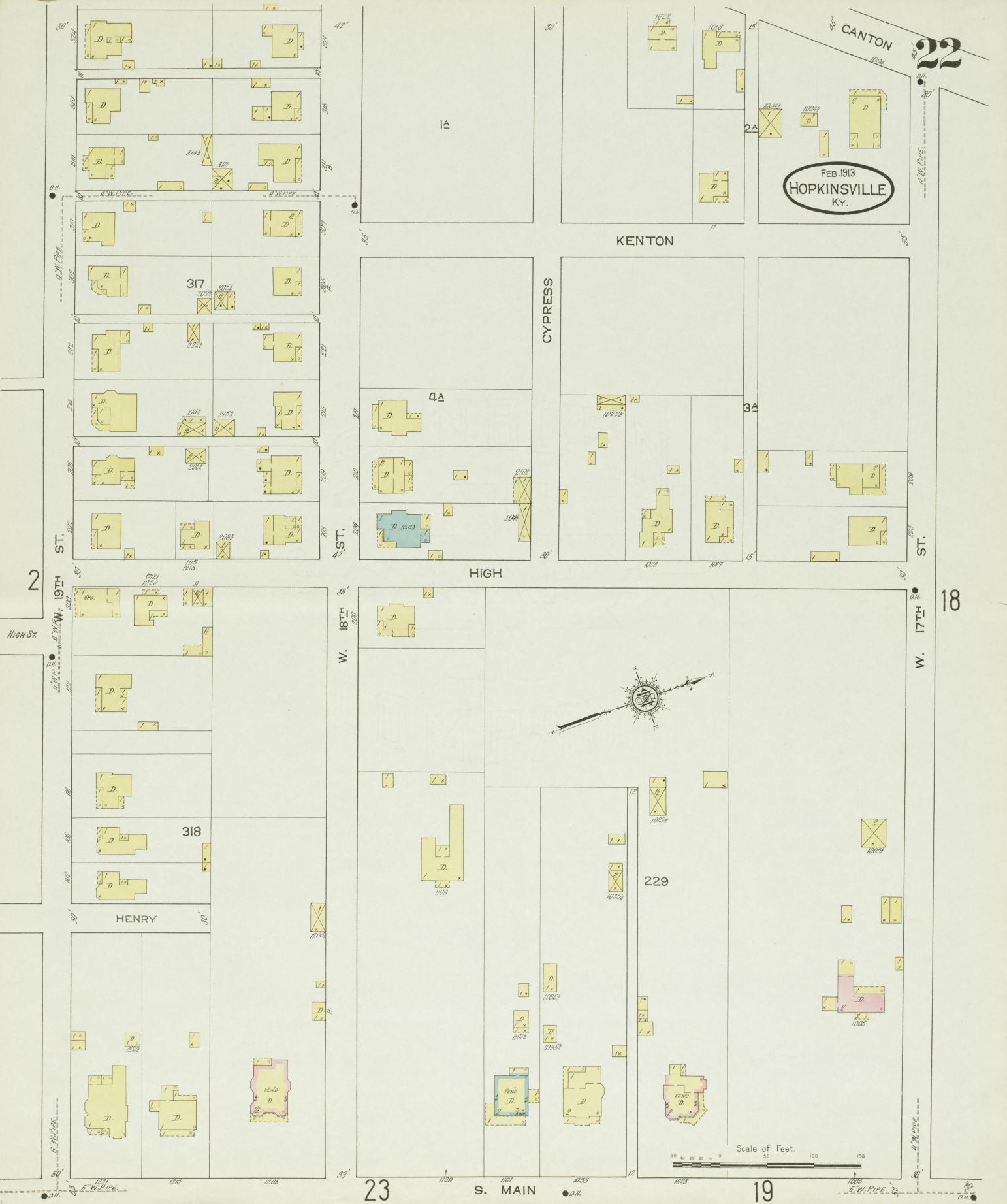


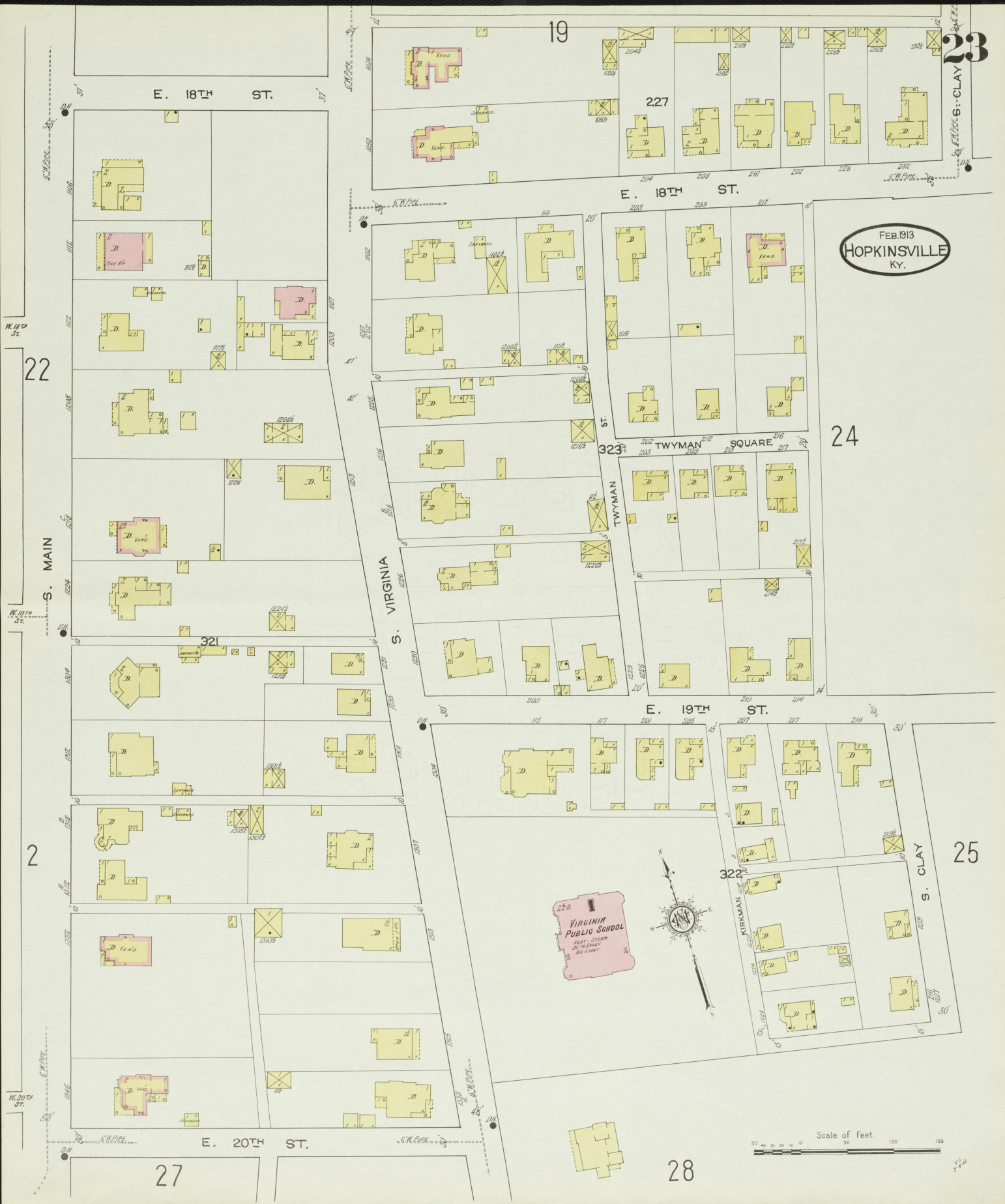
Scale of Feet
0 50 100 150

23

S. MAIN

19





FEB. 1913
HOPKINSVILLE
KY.

Scale of Feet.
0 50 100 150

23

19

227

E. 18TH ST.

E. 18TH ST.

22

24

S. MAIN

S. VIRGINIA

TWYMAN SQUARE

E. 19TH ST.

2

25

228
VIRGINIA
PUBLIC SCHOOL
BEST - CLEAN
SITINGS
NO LIGHT



E. 20TH ST.

27

28

S. CLAY

24

FEB. 1913
HOPKINSVILLE
KY.

23

19

S. CLAY

BRYAN

228

E. 18TH ST.

20

S. CAMPBELL

314

COLEMAN

315

WALNUT

21

26

E. 19TH ST.

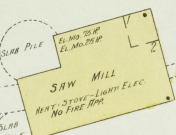
HOPPER CT.

PRIVATE ST.

HARRISON

FORBES M'FG. CO.

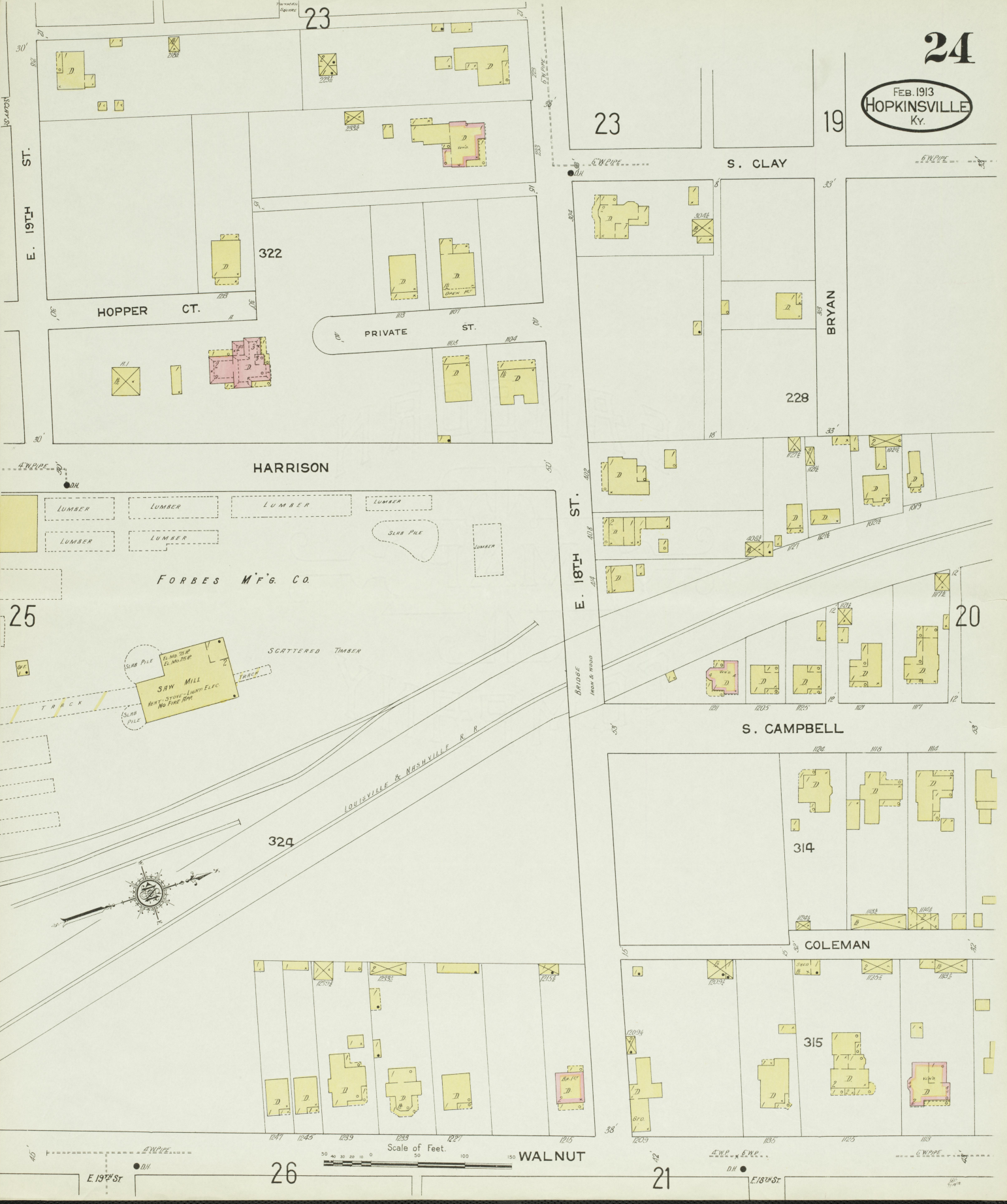
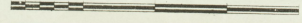
25



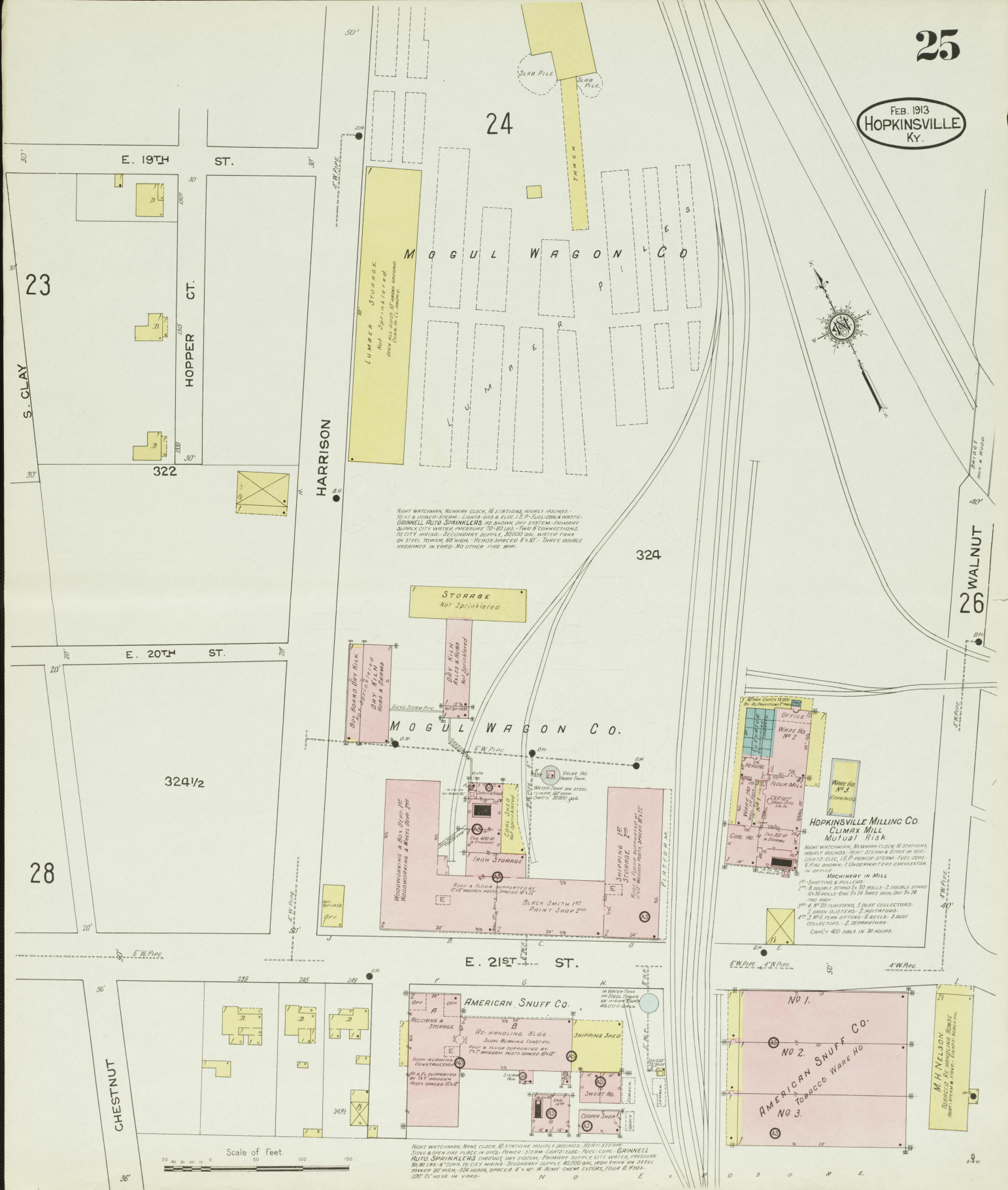
324



Scale of Feet.



FEB 1913
HOPKINSVILLE
Ky.



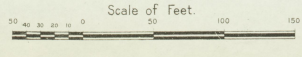
NIGHT WATCHMAN, NEWMAN CLOCK, 16 STATIONS HOURLY INDUSTRY - HEAT & POWER STEAM - LIGHTS GAS & ELEC. 1 1/2 P. FULL CORN WASTE - GRINELL AUTO SPRINKLERS - NO SHOWING FOR SYSTEM - FURNISH SUPPLY CITY WATER PRESSURE 80-90 LBS. & DOWN TO CITY MAINS - SECONDARY SUPPLY 40,000 GAL WATER TANK ON STEEL TOWER 80 HIGH - HEADS SPRINKER 8' & 10' - THREE DOUBLE HYDRANTS IN YARD - NO OTHER FIRE APP.

IRON STORAGE
BLACK SMITH 1ST
PRINT SHOP 2ND
Machinery in Mill
1st - SHUTTLING & ROLLERS
2nd - 2 ROLLER STANDS 5' 30" ROLLS - 2 DOUBLE STAND
30" ROLLS - ONE 5' 0" BARRE MACHINE, ONE 5' 0" TWO HILL
3rd & 4th 20" PURIFIERS, 3 DUST COLLECTORS - 2 BURN INLETTERS - 2 REFRIGERATORS
4th 3" 1/2" RUM SIFTERS, 3 BARRELS - 3 DUST COLLECTORS - 3 SEPARATORS
CAPACITY 400 BBL IN 24 HOURS

HOPKINSVILLE MILLING CO
CLIMAX MILL
MUTUAL RISK
NIGHT WATCHMAN, NEWMAN CLOCK 16 STATIONS HOURLY INDUSTRY - HEAT - STEAM & STOVE IN OFF. - LIGHTS ELEC. 1 1/2 P. POWER STEAM - FULL CORN WASTE - GRINELL AUTO SPRINKLERS - FURNISH SUPPLY CITY WATER PRESSURE 80-90 LBS. & DOWN TO CITY MAINS - SECONDARY SUPPLY 40,000 GAL WATER TANK ON STEEL TOWER 80 HIGH - HEADS SPRINKER 8' & 10' - THREE DOUBLE HYDRANTS IN YARD - NO OTHER FIRE APP.

AMERICAN SNUFF CO.
RE-HANDLING BLDG.
SLOW BURNING CONSTR.
SHIPMENT SHED
SWEAT SHED
COPPER SMOKE

AMERICAN SNUFF CO.
TOBACCO WARE HO.
No. 1
No. 2
No. 3



NIGHT WATCHMAN, NEWMAN CLOCK, 16 STATIONS HOURLY INDUSTRY - HEAT - STEAM & STOVE IN OFF. - LIGHTS ELEC. 1 1/2 P. POWER STEAM - FULL CORN WASTE - GRINELL AUTO SPRINKLERS - FURNISH SUPPLY CITY WATER PRESSURE 80-90 LBS. & DOWN TO CITY MAINS - SECONDARY SUPPLY 40,000 GAL WATER TANK ON STEEL TOWER 80 HIGH - HEADS SPRINKER 8' & 10' - THREE DOUBLE HYDRANTS IN YARD - NO OTHER FIRE APP.

FEB. 1913
HOPKINSVILLE
KY.

21

325

24

E. 19TH ST. (DURRETT AV.)



25

BENTLEY AV.

BEECH

WALNUT



RAILROAD ALLEY

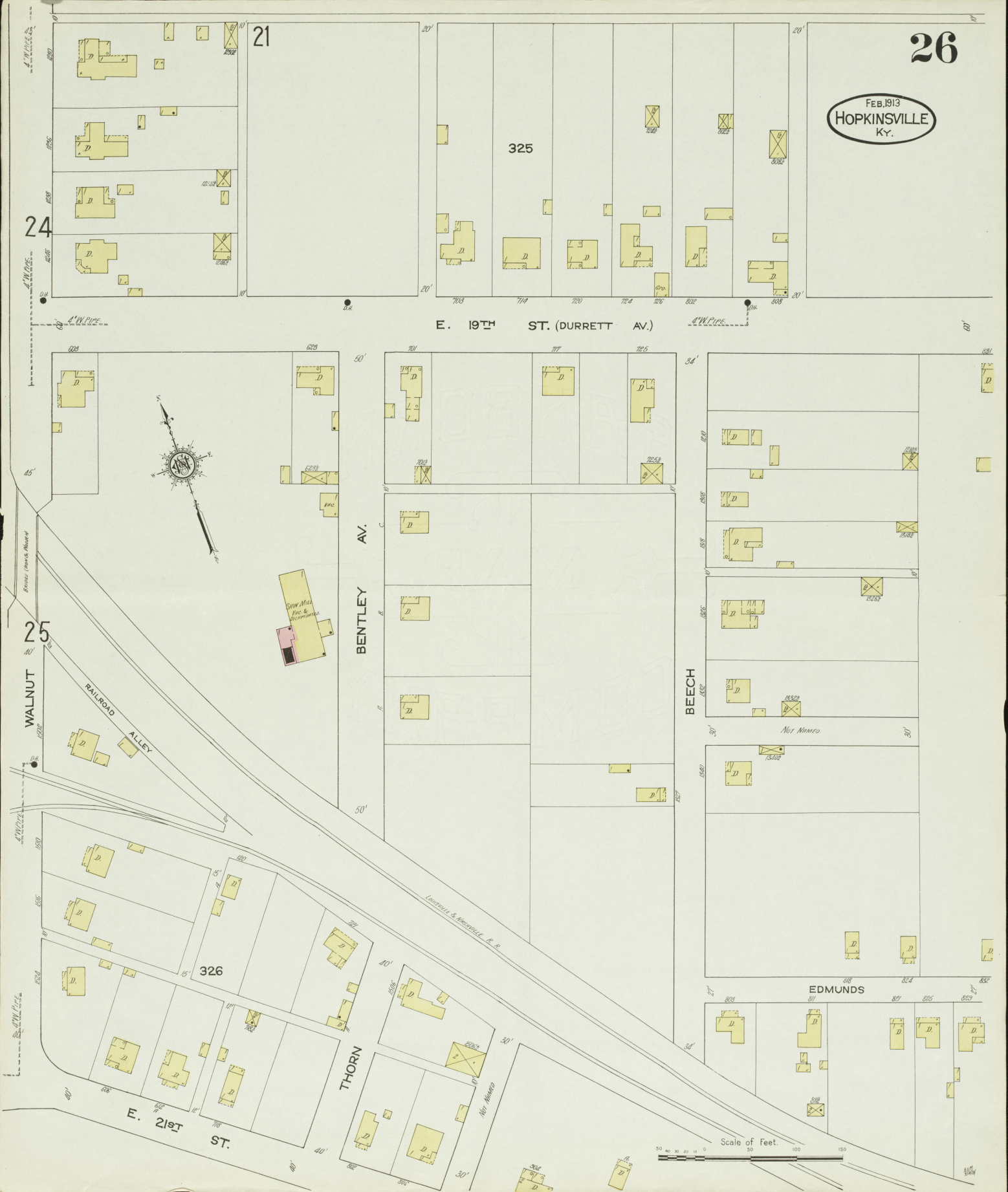
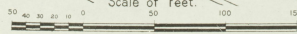
LOUISVILLE & NASHVILLE R. P.

EDMUNDS

E. 21ST ST.

THORN

Scale of Feet.



23

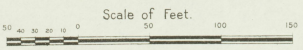
27

FEB. 1913
HOPKINSVILLE
KY.

316

28

3A



23

322

E. 20TH ST.

E. 20TH ST.

2A



E. 21ST ST.

25

27

S. VIRGINIA

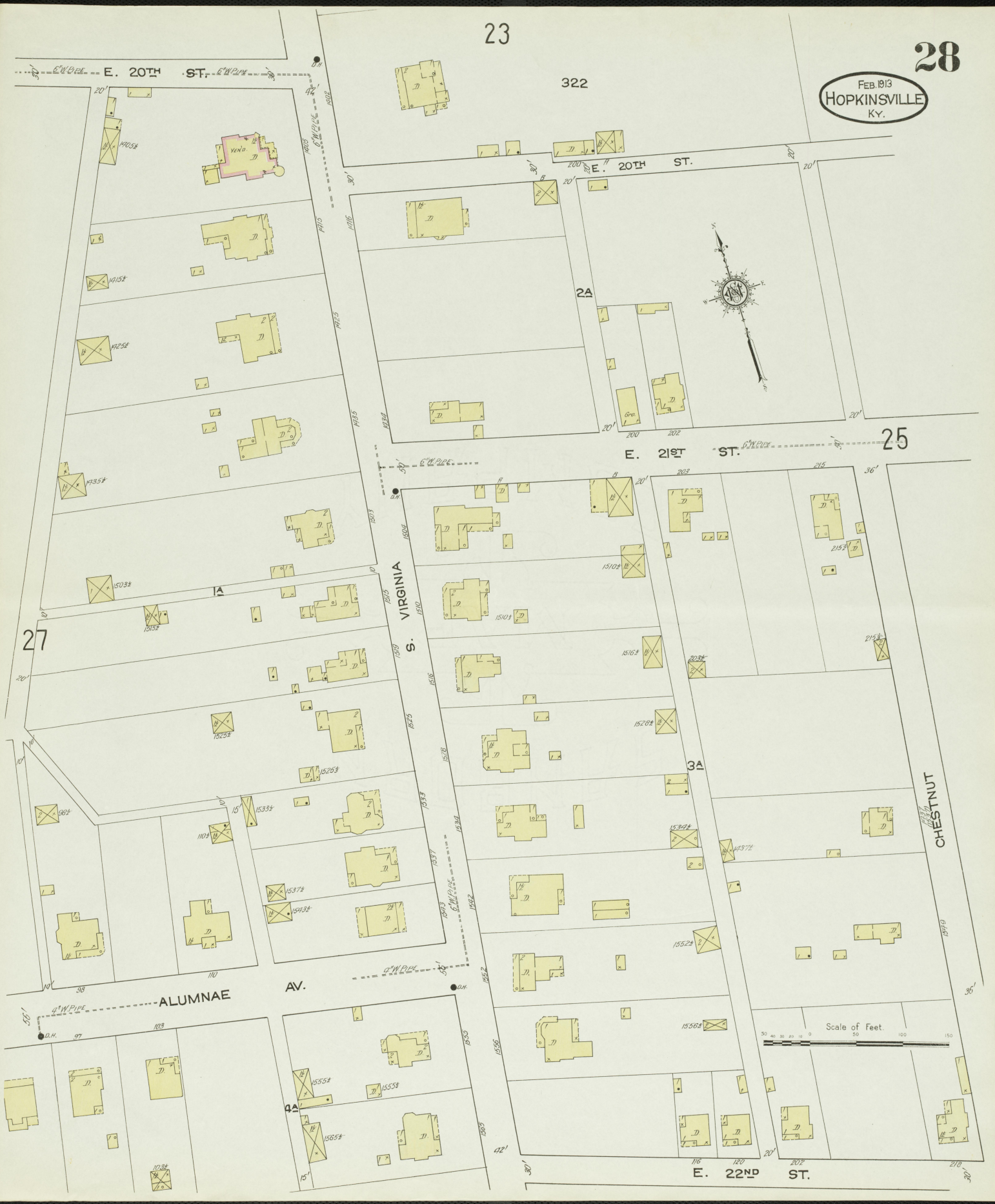
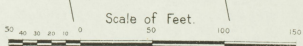
CHESTNUT

ALUMNAE AV.

AV.

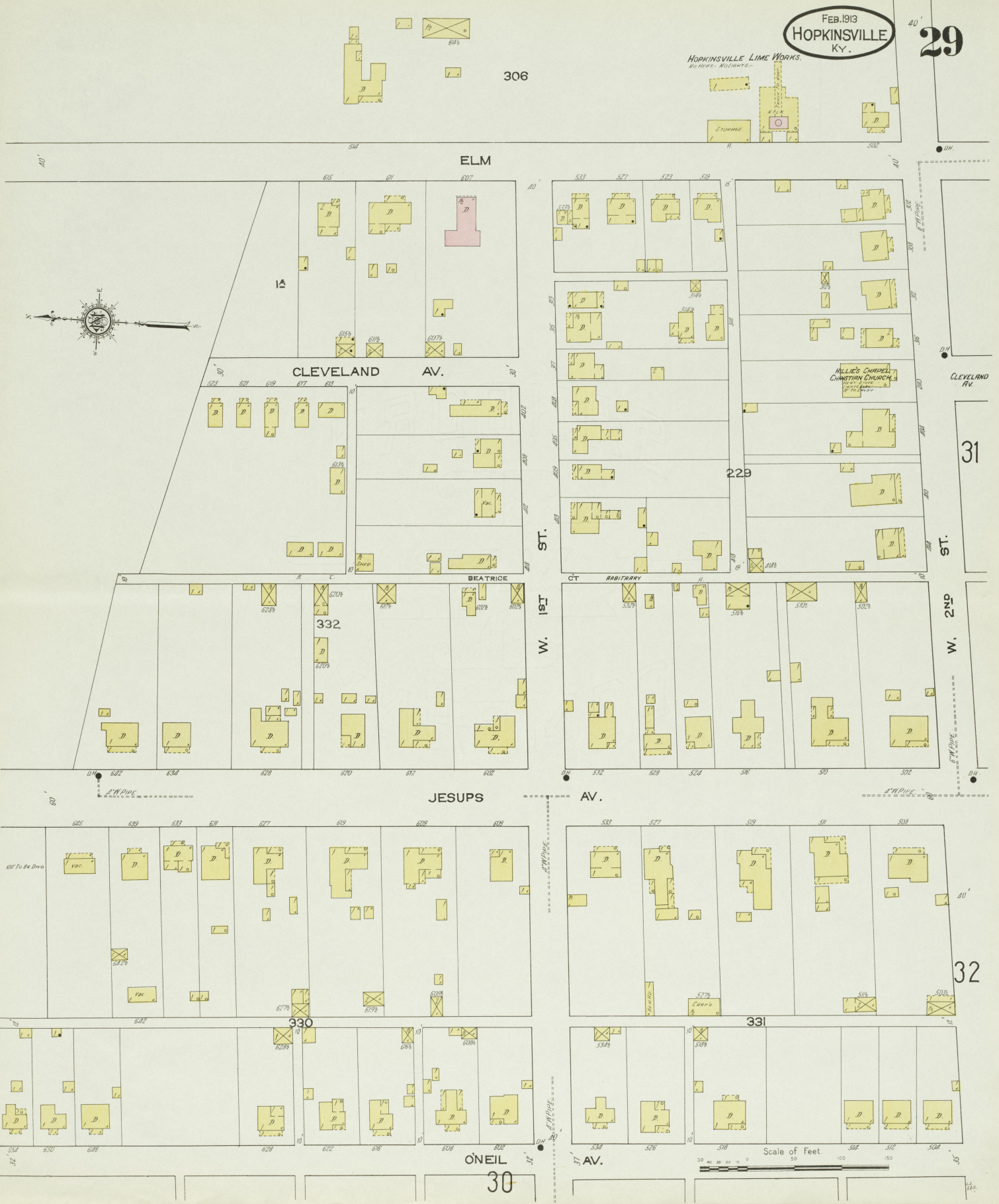
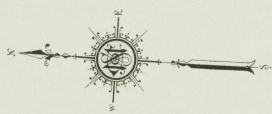
E. 22ND ST.

ST.



HOPKINSVILLE LIME WORKS.
No Heat - No Lights -

306

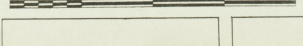


31

32

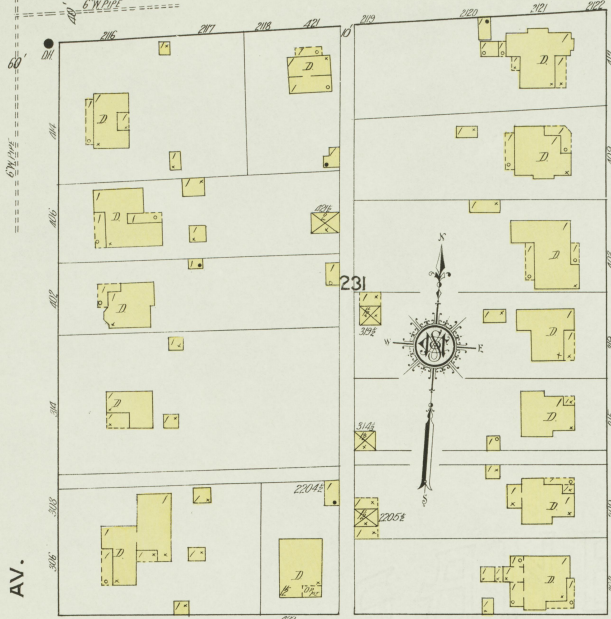
O'NEIL
30

Scale of Feet

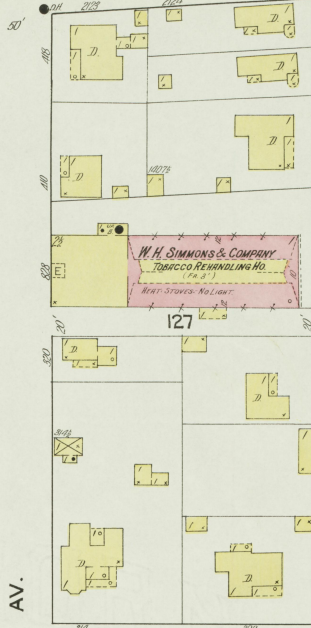


29

W. 2ND ST.

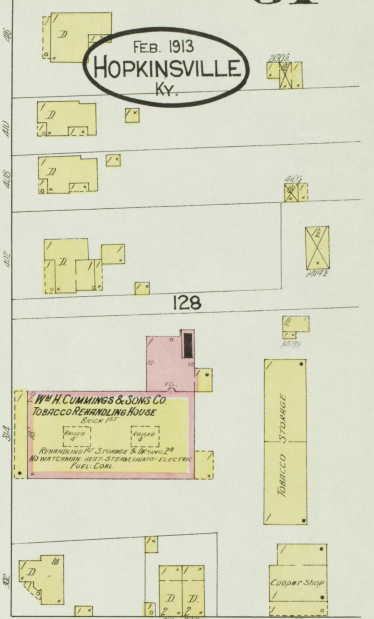


ST.



31

FEB 1913 HOPKINSVILLE KY.

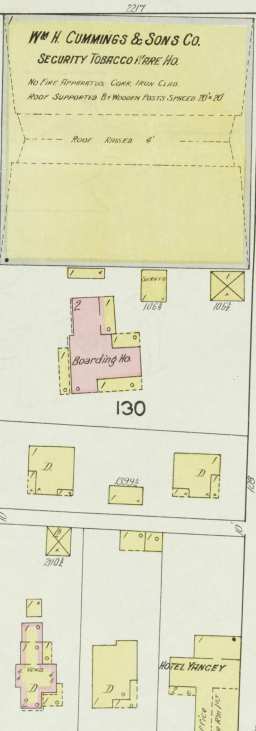


32

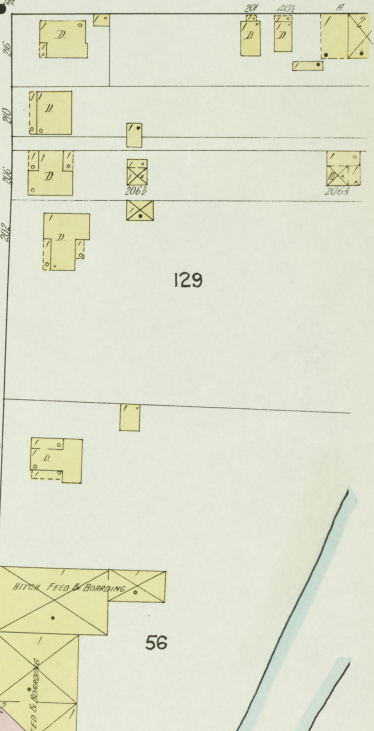
JESUPS



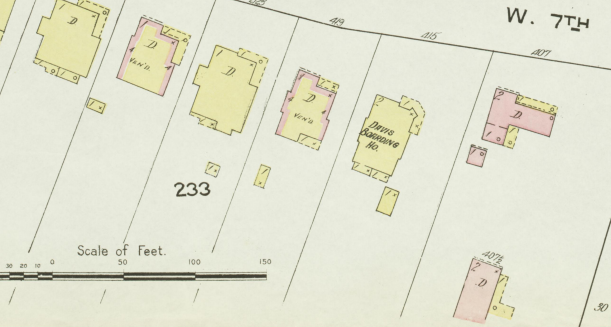
CLEVELAND



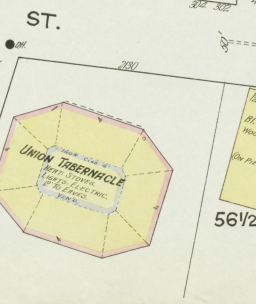
ELM



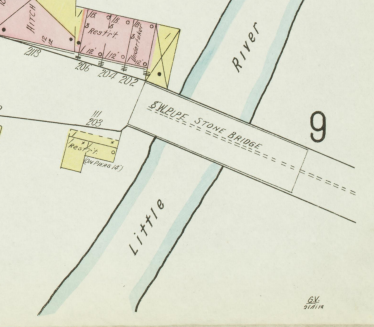
W. 7TH ST.



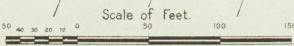
MERCER



ELM



9



87



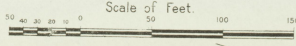
FEB. 1913
HOPKINSVILLE
KY.

YOUNG

HIPKINS

WEST SIDE
PUBLIC SCHOOL
NET. STEAM. H.P.
NO. 100000

SECOND BAPTIST
CHURCH
441 - 443
100000



29

30

32

233

4A

3A

2A

JESUPS 31 AV.

ONEIL AV.

KENTUCKY AV.

MC PHERSON AV.

W. 2ND ST.

ST.

W. 7TH

