



Gay and
Lesbian
Services
Organization

The GLSO NEWS

July 2007

A Publication of the Lexington Gay and Lesbian Services Organization
Volume 22 Number 7



Pride Idol 2007 Kaitlin Massey

Kaitlin sung herself into our hearts at the picnic this year. The crowd was particularly excited by the yodeling skills she demonstrated on her rendition of Leann Rimes' "I want to be a Cowboy's Sweetheart". We hope to hear more from this young woman. Congratulations Kaitlin!

Bluegrass Fairness 4th of July Parade

Join Bluegrass Fairness for another 4th of July Parade in downtown Lexington. We will be creating a float and would love to have you join us as we walk through downtown Lexington. . Come to the line up in preparation for the parade on Midland Ave, next to the Herald Leader, around 1:30. The parade begins at 2 pm. . You should not have any trouble finding us - we will be the most fabulous people in the parade.

If you missed it in last month's newsletter, Bluegrass Fairness has become independent from the KY Fairness Alliance and plans to work on LOCAL gay, lesbian, bisexual, and transgender issues. If you would like to be on our new mailing list, please e-mail us at bgfairness@insightbb.com. There is an article about Fairness on page 13.

Lexington Lyons Leather/Levi Club

The Lexington Lyons celebrate strength, unity, and diversity for those who enjoy the Leather /Levi Lifestyle. Our annual yard sale, the organization's largest fundraiser, will be held Sat, July 28, 8 am, at 3473 Castleton Hill Dr. just off Tates Creek Rd. Beneficiaries range from the New Orleans AIDS Task Force to our own GLSO. The Lyons are sponsors of AVOL again this year and contribute to other local groups through member contributions.

This year's yard sale will offer clothing, home improvement goods, electronics, PC components and peripherals, books, music, videos, and more including the obligatory yard sale crock pot. An invitational adults only section will feature novelties and media as well as phenomenal leather clothing items and toys, bedroom accessories, and furnishings for your safe sane and consensual explorations. Sales will support the upcoming 2008 Heart and Spirit education weekend

Join the Lyons for the most anticipated yard sale in the Kentucky community. *more info on page 5.*



The Lexington Lyons

July 28
Yard Sale



**GAY AND
LESBIAN
SERVICES
ORGANIZATION**

Lexington, Kentucky

*Publishes the GLSO News Monthly
Vol. 22 No.7*

*P.O. Box 1172 Lex., KY 40588
www.lexingtonglso@yahoo.com*

Pride Center Office Manager
Bill Chandler
859 253-3233

News Editors
Mary Crone - Jackie Cobern
Sarah Phillips

Imperial Court of Ky

The new monarchs for Reign 26 chosen at our June Coronation are Emperor 26 Brad Shepherd and Empress 26 Lawren LaMoore (Chip Adams). See a wrap up of Coronation 26 on page 14.

The first event for Reign 26 will be the annual Investiture Ceremony, where the new monarchs announce titles for the year and their respective lines of descent. Please look for flyers and posters announcing the date of this event, which will be held in July. You can keep up to date with the court by visiting www.impcourt.org/kentucky.

Inside This Issue

- Pride Center Activities** page 6
Retirement Strategies page 8
Discovering Our History pg 13
Fairness Article page 13
Court News page 14

MADELEINE TAYLOR BAUGH

Attorney- At- Law
Telephone: 859.281.5619
Email: mtbaugh@whgt.net



**Estate and life planning for
individuals, couples and families**

**Creating domestic partnership
agreements**

Organizing and advising small business

**Advising and representing those purchasing
or selling residential or commercial
real estate**

Madeleine Taylor Baugh, PLLC
This is an advertisement

**PAGE(S)
MISSING**

ANNUAL CHARITY

YARD SALE



**SATURDAY
JULY 28TH**

3473 Castleton Hill

Just outside New Circle Road off Tates Creek

OUR PREMIUM OFFERINGS BENEFITTING OUR BENEFICIARIES

HOME IMPROVEMENT MATERIALS

ART AND LITERATURE, RETRO FURNISHINGS

APPLIANCES, VIDEO & COMPUTER EQUIPMENT

OFFICE FURNITURE, CLOTHING, BOOKS, VIDEO

**OUR ADULT INVITATIONAL SECTION
BENEFITS COMMUNITY EDUCATION**

NOVELTIES

LEATHER ITEMS

CREATIVE FURNISHINGS

LIBRARY AND MEDIA MATERIALS

BENEFICIARIES

New Orleans AIDS Task Force; Moveable Feast; Lexington Kentucky GLSO; Pride Center of the Bluegrass; The Sexual Minority Youth Assistance League of Washington, D.C.; Leather Archives and Museum; Cleveland Leather Awareness Weekend; International Deaf Leather; International Mister Leather; The Great Lakes Leather Alliance; Kentucky Fairness Alliance; AIDS Volunteers of Lexington.

THE LEXINGTON LYONS

YOU AIN'T SEEN NOTHIN' YET

Member, Mid America Conference of Clubs *Experience Kentucky's Energy!* CLICK US: WWW.LEXYONS.ORG

GLSO Pride Center

389 Waller Ave. 859 253-3233 Open 10 to 3 Mo - Fr 10 - 2 Sat.

Regular Activities

Discussion Group

Every Wednesday Night

7 to 9

All Are Welcome

Lexington Insight

New Coordinator - Please attend
and help set new direction

Lexington Insight is in the process of reorganization. Dana has volunteered to be the coordinator and would love people to attend and discuss how the group can be responsive to your needs. Join us on July 6, at 7 pm for pot luck and a movie.

Dana will host the group on the first Friday of every month, at 7 pm. If you could like to volunteer to host an additional meeting, or have suggestions for other activities, call Dana at 859-230-2428."

On the fourth Saturday of each month Dana is planning "InsightOut" activities. These activities may include hiking, bowling, or attending a reading group at Joseph-Beth. Have some ideas? Call Dana at the number above. |



*"Keep the love you find,
Get the love you want!"*

Jessica Bollinger LCSW
Imago Relationship Therapist
EMDR Trauma Work
Couples, Family, Individual
imagoconnection.com 552-6533

Low Cost Printing at the Pride Center

Black and White \$.06

Color Printing \$.50

call 253-3233

389 Waller Ave.

NEED YARD HELP?

RAISED BEDS

BRUSH
REMOVAL

MOWING

TRIMMING

LIGHT
HAULING

WEED EATING

Call Jane

494-5427



Kentucky Rain

Body Lotion personally by
Clancy McClanahan

H 859 278-7203

C 859 576-2186

Essential Oils Available



Financial Planning for Domestic Partners

Similar Goals. Different Challenges.

Domestic partners may share similar goals with married individuals, yet they face unique challenges when it comes to financial planning. We will help you develop a plan that's appropriate to your needs—one that takes into account not only where you want to go, but also how you want to get there.

For information, call

Mohua "Mou" Das

Financial Advisor

859-335-8118 888-390-6900

mohua.das@ubs.com

307 South Ashland Avenue, Lexington, KY 40502

www.ubs.com/fa/mohuadas

You & Us



Developing a Retirement Strategy

by Mohua Das

Financial Advisor

UBS Financial Services Inc.

Planning for retirement means far more than simply accumulating a nest egg for the years when you're no longer working. It involves developing a long-term investment strategy that helps you address this critical goal without losing sight of your more immediate financial concerns, such as paying your mortgage or sending a child to college.

Where Will Your Retirement Nest Egg Come From?

You will potentially need at least 75% of your pre-retirement income to maintain your standard of living in your retirement years. Therefore, before you can formulate a cohesive retirement plan, you need to determine what your sources of income will be in retirement.

Social Security Benefits.

These days, Social Security represents only a small portion of the income most retirees will need. According to a study done by the Employee Benefit Research Institute, individuals 65-years-old or older whose post-retirement annual income was at least \$50,000 would generally derive only 13.1% of their retirement income from Social Security.

Your Company Retirement Plan

Past generations relied on company pension plans to take care of their retirement needs. While many companies still maintain defined benefit plans, many have switched to or added defined contribution plans, such as 401(k) plans. With a 401(k) plan, the responsibility is on you to contribute to the plan and determine how your savings will be invested.

If your employer offers a 401(k) plan, you generally have the ability to invest in a variety of professionally managed investment options. The earnings on the money you invest are tax deferred, so the

entire amount can be reinvested in the plan to compound your return. Contributing to the plan can also give you immediate income tax savings. That's because 401(k) plans are pre-tax salary deferral plans, which means you do not have to pay income taxes on your contributions to the plan until you make a withdrawal.

If you are eligible to participate, you may generally contribute up to \$15,500 each year, and \$20,500 if you are age 50 or above depending upon the provisions of the plan and other limitations imposed by law. For example, 401(k) plans must meet non-discrimination tests, which can limit the amount that highly compensated employees may elect to defer from salary and receive as matching contributions based on the amounts that non-highly compensated employees can defer and receive.

Individual Retirement Accounts "IRAs"

If you don't have an IRA, you could be passing up a valuable opportunity to save for your retirement. Whether you choose a traditional IRA or a Roth IRA, the same basic tax-favored principle applies: every dollar of earnings can be reinvested to earn more without having to make current tax payments.

As a result, an investment in an IRA is progressively worth more than the same amount invested in a taxable account. This powerful feature allows you to potentially accumulate more assets than if you had invested the same dollars in a taxable account.

The Responsibility to Plan Is Yours

The majority of the income you'll need in retirement will most likely come from you. That's why it's vital that you take the time now to develop an intelligent, practical retirement plan that can help you pursue your retirement income needs.

A good way to start is to participate to the fullest extent possible in a 401(k) plan (if

continued on page 12

GLSO RAINBOW SPONSOR

The Imperial Court of Kentucky.....252-3914

A Charity Organization

2007 PRIDE MONTH SPONSOR:

Scott Ackerman.....(mobile) 338-8483

For all your real estate needs

GLSO NEWS SPONSORS 2007

SisterSound806-0243

Diverse music for all women

Richardson Vision Center

1757 Alexandria Drive Gardenside.....278-4201

Ernesto Scorson

Attorney At Law254-5766

Unitarian Universalist Church

Seeking a Diverse Congregation.....223-1448

Kentucky Fairness Alliance

Bluegrass Chapter.....806-4114

Windy Knoll Farm

Riding Lessons, Trail Riding, Boarding.....299-7410

Debra Hensley Insurance.....276-3244

1513 Nicholasville Rd.

Lexington Lyons619-3650

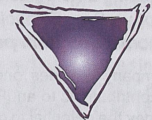
Levi and Leather Club

Ky. Department for Public Health.....1 800 420-7431

HIV/AIDS Branch

GLSO Newsletter Calendar JULY 2007

To schedule events at the Pride Center, call Bill at 253-3233
Visit us on the web at: www.webspawner.com/users/glsqxnet



Sunday Monday Tuesday Wednesday Thursday Friday Saturday

More information about many of the events are in this newsletter. You may want to call or email the group to confirm the date and time, see the directory on back page.

Pride Center may be abbreviated - PC Call for Place may be abbreviated - Call

Weekly Activities:

Mondays:

8pm - Gay/ Lesbian AA Discussion/Speaker (Call for Location) 278-7103

Tuesdays:

7pm - GSA (Gay Straight Alliance)
9pm - Karaoke Tuesday @ The Bar Complex

Wednesdays:

7pm - GLSO Discussion Group
8pm - Gay/Lesbian AA (Call for Location) 278-7103

Fridays:

8pm - Gay/Lesbian AA (Call for Location) 278-7103

Saturdays:

Sundays:

9am & 11am - UU Church Worship Services.
10:30 - Mass, St. Mychal The Martyr.
6pm - SisterSound Rehearsal @ Landsdowne Presby. Church.

Bi-weekly:

6pm - The Imperial Court SoulForce -Call Jamie 230-5625

1st & 4th Fridays:

Monthly Activities:

Mondays:

7:30pm - GLSO Board Mtg. (4th Mon.)
7pm - Lexington Lyons (2nd Mon.)

Saturday:

7pm - LexDGA 1st Sat.
7pm - Singles Support 2nd Sat.

Sundays:

4pm - Integrity (2nd Sun)
4pm - Gen Y Integrity (3rd Sun)

10:30 a St. Mychal's 11a UU Church SoulForce (Jamie 230-5625 4p Integrity @ St. Michael's 6p SisterSound Rehearsal	2	7p GSA (call for place 266-5904) 9p Karaoke Tuesday @ The Bar Complex A Weekly Benefit for The Pride Center	7p GLSO Discussion Group-PC 8p Gay/Lesbian AA Call for place 948-3434 INDEPENDENCE DAY Join Fairness in the Parade 1:30-line up @ Main &	5	7p Lexington Insight Potluck & Movie @ the Pride Center	7 Center Open 10a-2p LexDGA Call for Place
10:30 a St. Mychal's 11a UU Church SoulForce (Jamie 230-5625 4p Integrity @ St. Michael's 6p SisterSound Rehearsal 6:00p Imperial Court Mtg.	9	7p GSA (call for place 266-5904) 9p Karaoke Tuesday @ The Bar Complex A Weekly Benefit for The Pride Center	7p GLSO Discussion Group-PC 8p Gay/Lesbian AA Call for place 948-3434	12	13	14 Center Open 10a-2p 7p Games Night PC
10:30 a St. Mychal's 11a UU Church SoulForce (Jamie 230-5625 4p Integrity @ St. Michael's 6p SisterSound Rehearsal Newsletter Dead-line	15	7p Lexington Lyons-PC 7p GSA (call for place 266-5904) 9p Karaoke Tuesday @ The Bar Complex A Weekly Benefit for The Pride Center	7p GLSO Discussion Group-PC 8p Gay/Lesbian AA Call for place 948-3434	18	19	20 Center Open 10a-2p 21
10:30 a St. Mychal's 11a UU Church SoulForce (Jamie 230-5625 4p Integrity @ St. Michael's 6p SisterSound Rehearsal 6:00p Imperial Court Mtg.	22 7:30p GLSO Board Mtg.	7p GSA (call for place 266-5904) 9p Karaoke Tuesday @ The Bar Complex A Weekly Benefit for The Pride Center	7p GLSO Discussion Group-PC 8p Gay/Lesbian AA Call for place 948-3434	25	26	27 Center Open 10a-2p Lexington Lyons Yard Sale 28

Developing a Retirement Strategy
by Mohua Das, Financial Advisor
continued from page 8

your company provides one) and make annual contributions to an IRA. Both give your money the potential to grow on a tax-deferred basis.

Professional Advice

There are many tools available to help you quantify your goals and implement your plans. By working with a professional financial advisor, he or she can help you develop a retirement plan that suits your particular goals and circumstances. Through education, patience and a disciplined approach to saving, you can pursue your long-term financial goals.

Neither UBS Financial Services Inc. nor its Financial Advisors provide tax or legal advice. You should consult an attorney or tax professional regarding your specific

situation.

Depending on your needs, we can help you implement your retirement strategies through both our advisory and brokerage capabilities.

1. *Employee Benefit Research Institute tabulations of data from the March 2006 Current Population Survey.*

2. *You must meet certain adjusted gross income ("AGI") limits in order to contribute to a Roth IRA.*

3. *All or a portion of the amount withdrawn from an IRA may be subject to ordinary income taxes. In addition, withdrawals taken prior to age 59½ may be subject to an additional 10% tax penalty for an early distribution.*

UBS Financial Services Inc. does not provide tax or legal advice. Consult with your tax and legal advisors regarding your specific situation.

Get the News at your doorstep and support the GLSO

Subscriptions help us pay Pride Center expenses
and supports our many projects

Pride Month

ActOut

Gay Straight Alliance for Youth

Discussion Group

Lexington Insight

Pride Library

The Diversity in Gender Alliance

Name :

Phone:

Address:

City:

State:

Zip:

- \$20 -1 year Membership & Newsletter for Individuals or Couples
 I would like the newsletter at this reduced rate \$ (\$12 or up)
 I am enclosing an additional contribution of \$

Please mail to: GISO News PO Box 1172 Lexington, KY 40588 1172

Discovering Our History "America The Beautiful"

The beginning of July brings us into a time of parades, fireworks and national celebration. It is a good time to honor Katharine Lee Bates, (August 12, 1859 March 28, 1929), the author of the words to "America the Beautiful".

Bates was born in Falmouth, Massachusetts and, graduated from Wellesley College in 1880. For many years she was a professor of English literature at Wellesley. She lived with Katharine Coman, a history and political economy teacher and founder of the Wellesley College Economics Dept. The pair lived together for twenty-five years until Coman's death in 1915.

Although historians are sometimes reluctant to make the assumption, it is not a stretch to believe that these two "Katharines" were lesbians in a loving partnership. It was not uncommon in that time (or our time) for unmarried women to live together and to be considered a "couple." These arrangements were sometimes called "Boston marriages" or "Wellesley marriages". These terms were sometimes derisive, but at the time a sexual relationship was not implied. (But we can certainly hope.)

In the summer of 1893, the two Katharines traveled across America, visiting Coman's parents, the World's Fair, and other landmarks on the way to a summer teaching position in Colorado Springs, Colorado.

Bates described an excursion taken during her stay in Colorado: "One day some of the other teachers and I decided to go on a trip to 14,000-foot Pikes Peak. We hired a prairie wagon. Near the top we had to leave the wagon and go the rest of the way on mules. I was very tired. But when I saw the view, I felt great joy. All the wonder of America seemed displayed there, with the sea-like expanse."

The first draft of "America the Beautiful" was hastily jotted in a notebook after that experience. The words to this now famous song first appeared in print as a poem in *The Congregationalist*, a weekly journal, for Independence Day, 1895. The poem reached a wider audience when her revised version was printed in the *Boston Evening Transcript*, November 19, 1904. Her final expanded version was set to music in 1913.

"America The Beautiful" has been sung to other music, but the familiar tune that we sing today was written by Samuel A. Ward. With words that express love for our country's natural beauty and spirit, it is a refreshing change from some of the nationalistic and militaristic songs that are played and sung at July 4th celebrations. Katharine Lee Bates died in Wellesley, Massachusetts, on March 28, 1929, aged 69. She was inducted into the Songwriters' Hall of Fame in 1970

Wedding Season Dilemma Fairness Solution

Here come the months of late spring and early summer, when the inevitable invitations arrive in our mail. Relatives, straight friends, relatives of straight friends will all be so happy if we'll join them in their celebrations of legal and often holy matrimonial vows

We may not be crazy about going to a lot of straight weddings and celebrating a kind of union that we are denied. We may feel, well, a little envious of the expensive gifts we're expected to furnish, of the universal support the happy couples will receive from their communities of friends and family of all persuasions

Still, there are those straight people in our lives whose love we do celebrate. And we want to be there for the big event. We may even be asked

continued on next page

Fairness ...continued from pg 13

to participate in the occasional wedding party. We know we'll go. We know we'll feel joy and togetherness. But there will be the nagging inequities; we won't shrug them off entirely. We'll wish there was some way to validate and celebrate all love, including ours, as we toast the joy of those we hold dear.

Long-time fairness activist, Jennifer Crossen, came up with the perfect solution to this dilemma. As a wedding gift to the happy couple, consider making a contribution in their names to Bluegrass Fairness.

The newlyweds will gain a kind of satisfaction that is hopefully greater than a kitchen appliance might provide. And you will know that, while celebrating a union that brings special advantages, you have contributed the ongoing efforts to bring those same benefits to all of us.

Imperial Court of Ky Celebrates 26th Annual Coronation

The Imperial Court of Kentucky kicked off Pride Month with Coronation weekend activities, June 1-4. On Friday evening, our local court entertainers performed for the In-Town Show, held at the Bar Complex. On Saturday, our visitors performed at Bluegrass Connection for the Out of Town Show. Later that evening, the Court sponsored a Male Revue Show featuring Tommy Blade and others from All Worlds Video.

The weekend culminated at the Coronation Ball, where Emperor 25 John Ridener and Empress 25 Sierra Reign greeted visiting courts from across America and celebrated our year of fundraising. There were several awards given that evening including the James Herndon Lifetime Achievement Award, which was presented to State Representative Kathy Stein.

The court also recognized Michael Thompson, founder of Moveable Feast, community activist, and longtime board member of the court, who passed away earlier this year, with the posthumous title of Honorary Emperor of Kentucky.

During the evening, the membership of the court voted on new monarchs, board members, and the Henry Faulkner Community Service Award. Of four nominees, the membership selected Fred Mills of the Kentucky Theater as its Community Service Award winner.

The board members elected to the Reign 26 Board of Directors were Bradley Day (Sierra Reign), Derrick Dooley (Georgia Peach), Richard Hembree, Kevin Parker (Adrianna Armand), John Ridener, and Donnie "E.V." Royse.

The final portion of the evening was the Crowning Ceremony of the new monarchs for Reign 26. Brad Shepherd was elected as Emperor 26 and Lawren LaMoore (Chip Adams) was elected as Empress 26. The Board of Directors and new monarchs will lead the organization for Reign 26 and look forward to continuing the success of Reign 25.

By the end of the weekend, Reign 25's fundraising total since last July was approximately \$40,000. In the coming weeks, the Board of Directors will be making final disbursements for the year to its designated charities.

The first event for Reign 26 will be the annual Investitures Ceremony, where the new monarchs give out their titles for the year and announce their respective lines of descent, the group of people who will assist them with their fundraising efforts for the year.

Please look for flyers and posters announcing the date of this event, which will be held in July. Also, you can keep up to date with the court by visiting their website at www.impcourt.org/kentucky.



KEITH DONIPHAN ELSTON

ATTORNEY AT LAW

OFFICE: 859-225-2348

CELL: 502-220-5555

EMAIL: ELSTONLAW@WINDSTREAM.NET

NEW! PRINCIPAL OFFICE IN LEXINGTON

FAMILY LAW FOR OUR FAMILIES

DOMESTIC PARTNER AGREEMENTS, SEPARATION AGREEMENTS, ADOPTION, DIVORCE, CHILD CUSTODY, VISITATION, CHILD SUPPORT, SAFER SCHOOLS, DOMESTIC VIOLENCE, ELDER LAW, & ESTATE PLANNING

Member, Kentucky Bar Association; Fayette County Bar Association; Louisville Bar Association; American Bar Association, Section on Family Law & Committee on Alternative Families, & National Lesbian & Gay Law Association.



CALL TODAY: 859 272-3481

MON - FRI 9 TO 6

SAT - 10 TO 5

Tates Creek Village Apartments

3051 Kirklevington Drive

Lexington, Ky. 40517

- ◆ 1, 2, & 3 bedroom Floor Plans
- ◆ 2 Pools with large Sun Decks
- ◆ Oversized Patios and Balconies
- ◆ 24 hour Maintenance
- ◆ 2 Tennis Courts
- ◆ state of the art Tanning Bed
- ◆ 24 hour on-site Laundry Facility
- ◆ washer-dryer connections available

The Positive View

By Dr. Sherry and Dr. Skippy

Part 5: Being a Positive Role Model

Roles models are important to us as we grow and develop, even in adulthood. We find our role models at school, in our communities, at work, or among our family and friends. For gay men and lesbians, however, finding role models who share their sexual identity can be very challenging because of the lack of access to a range of visible GLBT persons.

The responses to our survey indicated that gay men and lesbians recognize the importance of being a positive role model and find great satisfaction in giving of themselves in this way. For example, one gay man wrote, "I find it positive to be a role model for the gay community in my workplace. I enjoy being openly gay in the workplace, particularly where I work with younger gay and lesbian students who look to me for support and guidance."

A lesbian participant wrote, "I think my partner and I, working as 'out' lesbians, try to set an example and be good role models for ALL our friends, including our lesbian friends and couples."

In serving as a positive social role model, a gay man submitted, "Younger people look up to me and see you can be gay, happy, and in a committed relationship."

For one of the lesbian participants, being a positive role model took the form of mentoring a young woman who was newly out and providing her with the role model she wished she had when coming out: "I became a mentor of sorts to her. It made me so happy to know that she felt she could come to me for support, and I always took time with her, because having gone through some of the same experiences, I would have loved to be able to talk to someone that I could trust."

In other research that we have conducted, we have found that same-sex couples express a desire to have visible, positive same-sex couple role models. While there are many similarities between opposite-sex and same-sex couple relationships, there are also differences. For same-sex couples, it is important to see positive, long-term, committed, loving relationships. One respondent wrote about her family and friends' view of her relationship, "They see that we are happy together, complement each other, are good forces in each others' lives, and they admire our relationship."

Who are the people that you look to for inspiration about how to live your best life? How might you be a positive role model to others in the GLBT community? Most of us vastly underestimate our impact on those around us. What types of positive messages do you want others to read in your life? What small actions can you take to be a positive role model of life well-lived as a GLBT person?

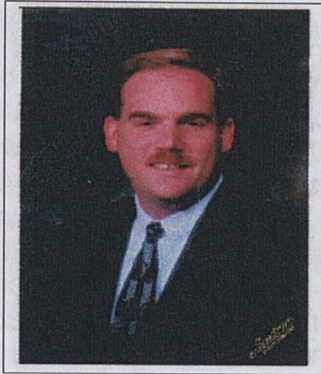
For more information about our work, go to www.PrismResearch.org. Dr. Sherry is Sherry Rostosky, PhD, Associate Professor of Counseling Psychology at UK. Prof. Skippy is Ellen Riggle, PhD, Professor of Gender and Women's Studies and Political Science at UK. This article is based on: Riggle, Whitman, Olson, Rostosky, & Strong. (2007). *The Positive Aspects of Being a Lesbian or Gay Man*.

We would love to include your story, essay, or opinion piece in this newsletter.

It may need to be edited so include contact information. Send by the 15th to:
lexingtonlso@yahoo.com
Marycrone@insightbb.com
Put newsletter in the subject line.

Pride Month Sponsor

Scott Ackerman Real Estate Service With



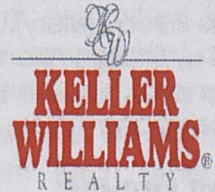
PROFESSIONALISM

RESULTS

INTEGRITY

DEDICATION

ENTHUSIASM



Mobile: 859 338-8483

Fax: 859 269-0065

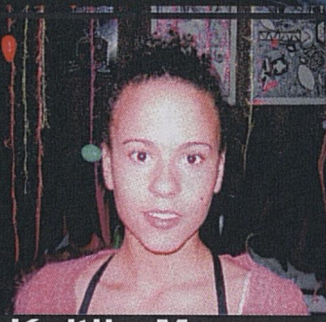
E-mail: SAckerman4224@aol.com



Serving Lexington &
All of Central Kentucky



Call me with all your Real Estate Needs



Kaitlin Massey



Congratulations to Kaitlin Massey who became our 2007 Lexington Pride Idol with a total of 80 votes from patrons at this year's annual Pride Picnic. The crowd went wild after Kaitlin's rendition of Leann Rimes' *I want to be a cowboy's sweetheart*, a song that requires having some good yodeling skills.



Chase

Congratulations also to our Runner-Up Chase and Second Runner-Up Burley Thomas. Our sincere Thanks to everyone who participated in this year's Pride Idol Competition, you are all winners and are truly appreciated. Thanks again.



Burley Thomas